

FALMOUTH SAILING WEEK 2024

Saturday 10th to Saturday 17th August

Organising Authority: Port of Falmouth Sailing Association (PoFSA)

(Website: www.falmouthweek.co.uk/sailing-week)

SAILING INSTRUCTIONS FOR THE BAY FLEET including the Ancasta Champagne and Firebird Long-Distance Races

PREAMBLE

These Sailing Instructions (SIs) are divided into five sections:

Section 1 applies to all racing.

Section 2 (beginning with SI 19) applies to Regatta courses for the Firebird class on all days except Wednesday 14 August.

Section 3 (beginning with SI 27) applies to the trapezium courses on all days except Wednesday 14 August.

Section 4 (beginning with SI 34) applies to the Regatta courses for all classes except Firebirds, on all days except Wednesday 14 August.

Section 5 (beginning with SI 42) applies only to the Champagne Race and Firebird Long-Distance Race on Wednesday 14 August.

Abbreviations:

[NP] - A breach of this rule will not be grounds for protest by a boat.

[DP] - Rules for which the penalties are at the discretion of the protest committee.

SECTION 1 - ALL RACING

1. RULES

1.1 The regatta will be governed by the rules as defined in *The Racing Rules of Sailing*. The following racing rules are changed:

RRS	SI
27.3	9.8
33	31
35	25.2, 33.2, 40.2, 47.3
61.1(a)(2)	11.1
62.1(a)	2.2, 3.3, 3.4, 9.5, 22.3, 25.3, 25.4, 29.2, 31, 33.3, 33.4, 37.4, 40.3, 44.3, 47.4, 47.5
A5.1	9.7, 25.2, 33.2, 40.2, 47.3
A5.2	9.7, 25.2, 33.2, 40.2, 47.3
A10	25.2, 33.2, 40.2, 47.3

1.2 RRS 40.1 will apply to Firebird catamarans at all times while afloat without Flag Y being displayed.

1.3 RRS 37 will not apply.

1.4 IRC Rules 2024 Parts A, B and C will apply, except that:

(a) [DP] IRC rule 21.1.5(e) is amended. The use of a spare mainsail will be allowed so long as it is carried onboard at all times while racing.

(b) [DP] For the purpose of IRC rules 21.1.5 (d) and (e) this regatta is on consecutive days and the sails carried shall remain the same.

(c) [DP] IRC rule 22.4.2 is changed: the number of crew shall not exceed the number printed on the certificate plus two.

1.5 World Sailing Offshore Special Regulations 2024 – 2025 Appendix B - Inshore Racing will apply.

1.6 [DP] World Sailing Appendix WP – Rules for Waypoints applies.

2. CHANGES TO THE SAILING INSTRUCTIONS

2.1 Any change to the sailing instructions will be posted before 0900 hrs on the day it will take effect, except that any change to the schedule of races will be posted by 2030 hrs on the day before it will take effect.

2.2 [NP] Oral changes on the water to these sailing instructions shall be broadcast on VHF Ch. 72. A broadcast shall be introduced as a change to a SI and shall identify the SI being changed. Failure to receive such broadcasts will not be grounds for redress. This changes RRS 62.1(a).

3. COMMUNICATIONS WITH COMPETITORS

3.1 Notices to competitors will be posted on the official notice board located on the Falmouth Week website at www.falmouthweek.co.uk/race-management.

3.2 [NP] On the water, the race committee intends to monitor and communicate with competitors on VHF Ch. 72.

3.3 All starting, postponement, abandonment, shortening and recall signals, the course to be sailed and the count down, will, where possible, be broadcast by the race committee on VHF Ch. 72. Failure to make a broadcast or to time it accurately, and failure to receive such broadcasts, shall not be grounds for a request for redress. This changes RRS 62.1(a).

3.4 Changes to finishing window times and the time of the first boat in a class to finish may be broadcast by the race committee on VHF Ch. 72. Failure to receive such broadcasts will not be grounds for redress. This changes RRS 62.1(a).

3.5 [DP] While racing, except in an emergency, a boat shall not make voice or data transmissions and shall not receive voice or data communications that are not available to all boats.

3.6 The race committee may use WhatsApp to alert competitors to notices being posted, and to repeat information communicated by VHF. The QR code to join the Bay Fleet WhatsApp group is attached to these sailing instructions.

4. CODE OF CONDUCT

[DP] Competitors and support persons shall comply with reasonable requests from race officials.

5. SIGNALS MADE ASHORE

5.1 Signals made ashore will be displayed at the Royal Cornwall Yacht Club signal mast, (see <https://www.royalcornwallyachtclub.org/webcam/>) and may be repeated at Mylor Yacht Club, Restronguet Sailing Club and St Mawes Sailing Club.

5.2 When flag “AP” is displayed ashore, “1 minute” is replaced with “not less than 75 minutes” in the race signal AP.

5.3 When pennant “4”, is displayed over a race signal that instruction shall apply to the trapezoid and regatta fleets in the Bay only.

5.4 When pennant “5”, is displayed over a race signal that instruction shall apply to the Champagne fleet only.

6. SCHEDULE OF RACES

6.1 The Skipper’s Briefing will be held at the Royal Cornwall Yacht Club at 1800 hrs on Saturday 10th August.

6.2 Racing is scheduled on seven days from Sunday 11th to Saturday 17th August. For all classes, racing on Sunday, Monday, Tuesday, Thursday, Friday and Saturday will comprise a six-day series and racing on Sunday, Monday and Tuesday will comprise a three-day series.

(a) Firebird class. On Sunday, Monday and Tuesday, this class is scheduled to sail one race per day. On Thursday, Friday and Saturday this class is scheduled to sail two races per day. All races for this class will be on a regatta course. Races not completed on these days will not be re-sailed. One extra race per day may be sailed, provided that the class does not become more than one race ahead of schedule and the change is made in accordance with SI 2.

(b) IRC and YTC classes. On Sunday, Monday and Tuesday, these classes are scheduled to sail two races per day. The first race on each day will be on a trapezoid course and the second race will be on a regatta course. On Thursday, Friday and Saturday these classes are scheduled to sail three races per day. The first two races on each day will be on a trapezoid course and the third race will be on a regatta course. Races not completed on these days will not be re-sailed. One extra race per day may be sailed, provided that the

class does not become more than one race ahead of schedule and the change is made in accordance with SI 2.

- (c) All classes on Wednesday. On Wednesday, IRC & YTC classes will sail one race, the Ancasta Champagne Race, on a long regatta course. Firebirds will sail a race longer than the normal race as sailed on other days, but not as long as the Ancasta Champagne Race. Any race not completed on Wednesday will not be re-sailed.
- (d) Warning Signal. The warning signal for the first race for the Bay fleet will not be before 1055, except on Wednesday when it will not be before 1025. The warning signals for subsequent races will be as shown in the relevant sections of these SIs.
- (e) No warning signal shall be made after 1500 on Saturday.

7. CLASS FLAGS

7.1 All boats racing, except the Firebird class, are required to display class flags.

7.2 Class flags for the regatta are:

Class	Class Flag	Class	Class Flag	Class	Class Flag
IRC Div 1	1	YTC Div E	E	Firebirds	F
IRC Div 2	2	YTC Div Q	Q		
IRC Div 3	3	YTC Div U	U		

8. AREAS THAT ARE OBSTRUCTIONS

- 8.1 Commercial and military shipping. Commercial and military shipping under way and constricted in their ability to manoeuvre are designated as moving exclusion zones. The exclusion zone extends to 100m on all sides of the vessel and includes tugs, race committee escort vessels and pilot vessels. No boat shall enter the exclusion zone and if becalmed may use any means of propulsion to move out of the way. This should only be sufficient to leave the exclusion zone by the safest possible route and offer the competitor no significant advantage in the race.
- 8.2 Divers. Exclusion zones extend 25m around a dive vessel displaying code flag A, an inflatable orange buoy marking a diver just under the surface, and a diver on the surface. A boat shall not enter the 25m zone.

9. THE START

- 9.1 The race committee signals vessel is the white-hulled Jeaneau 40 sloop "Bibo". The signals vessel will describe its approximate position on VHF Ch. 72 approximately 30 minutes before the first scheduled warning signal.
- 9.2 The starting line will be between the mast on the signals vessel, displaying an orange flag, and a MarkSetBot robotic self-positioning mark (see Addendum F).
- 9.3 For the first class to start, an attention signal (orange flag with one sound signal) will be made five minutes before the warning signal. The race committee will designate the course to be sailed before or with the attention signal.
- 9.4 A starting inner limit mark (ILM) may be placed off the signals vessel. Boats shall leave the ILM on the same hand as the signals vessel. The ILM will not necessarily lie on the start line.
- 9.5 If any part of a boat's hull is on the course side of the starting line during the two minutes before her starting signal and she is identified, the race committee will attempt to broadcast her sail number on VHF. Failure to make a broadcast or to time it accurately will not be grounds for a request for redress. This changes rule 62.1(a).
- 9.6 [DP] Boats whose warning signal has not been made shall avoid the starting area during the starting sequence of other races.
- 9.7 A boat starting later than four minutes after her starting signal will be scored Did Not Start without a hearing. This changes RRS A5.1 and A5.2.
- 9.8 In the event of a general recall, the warning signal for the next class to start will be removed and then re-displayed with the next starting signal of the recalled class. This changes RRS 27.3.

10. PENALTY SYSTEM

For all classes RRS 44.1 is changed so that the Two-Turns Penalty is replaced by the One-Turn Penalty.

11. HEARING REQUESTS

- 11.1 Boats shall comply with rule 61.1(a) irrespective of their length. This changes rule 61.1(a)(2) which is deleted.
- 11.2 Hearing request forms are available at the host club of the day or may be downloaded from www.rya.org/racing/racing-rules/Pages/rya-protest-form.aspx. Protests shall be submitted and protest hearings will be held as shown in the table below:

Protests for races on:	Protest time limit	Protest form to be handed to:	Protests will be heard at:	Schedule of protests will be posted at:
Sunday	1800 Sunday	Sailing Secretary, HRSC	MYC on Monday	MYC by 1820 Monday
Monday	1800 Monday	Sailing Secretary, MYC	MYC on Monday	MYC by 1820 Monday
Tuesday	1800 Tuesday	Sailing Secretary, RSC	RSC on Tuesday	RSC by 1820 Tuesday
Wednesday	1800 Thursday	Sailing Secretary, RCYC	RCYC on Thursday	RCYC by 1820 Thursday
Thursday	1800 Thursday	Sailing Secretary, RCYC	RCYC on Thursday	RCYC by 1820 Thursday
Friday	1800 Friday	StMSC office	StMSC on Friday	StMSC by 1820 Friday
Saturday	1800 Saturday	Sailing Secretary, FSC	RCYC on Saturday	FSC by 1820 Saturday

11.3 The protest time limit applies also to protests by the race committee about incidents they observe in the racing area.

11.4 Adding to RRS 66, if the race signal “N over A” is displayed ashore on the last scheduled day of racing a request for reopening a hearing shall be delivered not later than 30 minutes after the signal is displayed.

12. SCORING

12.1 The three-day series (races on Thursday, Friday and Saturday only).

Classes	Number of races scheduled	Number of races required to constitute a series	No discards	One discard	Two discards
Firebirds	6	1	Fewer than 5 races	Five or 6 races	n/a
IRC and YTC	9	1		From 5 to 8 race	More than 8 races

12.2 The six-day series (races on Sunday, Monday, Tuesday, Thursday, Friday and Saturday).

Classes	Number of races scheduled	Number of races required to constitute a series	No discards	One discard	Two discards
Firebirds	9	1	Fewer than 5 races	From 5 to 8 races	More than 8 races
IRC and YTC	15	1		From 5 to 8 races	More than 8 races

In the tables above, “no discards” means that a boat’s series score shall be the sum of her race scores; “one discard” means that a boat’s series score shall be the sum of her race scores excluding her worst discardable score; “two discards” means that a boat’s series score shall be the sum of her race scores excluding her two worst discardable scores.

12.3 Inter-Club Championship.

- (a) Boats participating in the Inter-Club Championship shall be scored according to their class series scores in the Three-Day Series. Team scores will be calculating by adding the series scores of each boat in the team. The team with the lowest total score wins the championship and others shall be ranked accordingly.
- (b) If there is a tie between two or more teams, then they shall be ranked by their team scores in the last race. If a tie remains then they shall be ranked by their team scores in the next-to-last race and so on until all ties are broken.
- (c) Series scores will be adjusted when classes sail different numbers of races.

13. SAFETY REGULATIONS

13.1 SIs 13.2 to 13.5 are in addition to the requirements of NoR regulation 4.4

- 13.2** [NP] Competitors who leave the cockpit of a boat not fitted with guardrails shall wear an appropriate personal flotation device.
- 13.3** [DP] Any boat that retires from a race shall inform the signals vessel, or another official vessel, as soon as possible on VHF Ch. **72**. If unable to do so, they shall inform the race office by telephone (07775 574308) at the first opportunity.
- 13.4** Competitors requiring assistance from a patrol vessel should call “Bay Safety Control” on VHF Ch. **72**.

14. EQUIPMENT AND MEASUREMENT CHECKS

- 14.1** A boat or equipment may be inspected at any time for compliance with the class rules, notice of race and sailing instructions.
- 14.2** [DP] When instructed by a race official on the water, a boat shall proceed to a designated area for inspection.

15. HAUL OUT RESTRICTIONS

Boats shall not be hauled out during the regatta except with and according to the terms of prior written permission of the race committee.

16. PRIZES

16.1 Prizes will be awarded in accordance with the Notice of Race.

16.2 Daily prizes will be presented at approximately 1815 as follows:

Sunday	HRSC (including B class if it races with the Bay fleet)
Monday	MYC
Tuesday	RSC
Wednesday	No prize-giving because of the flying display
Thursday	RCYC (including the prizes for Wednesday)
Friday	StMSC
Saturday	FSC

Daily presentations will be preceded by a traditional regatta tea for all competitors.

16.3 Series prizes will be presented on Saturday at Flushing Sailing Club at approximately 1900, following the daily prizegiving.

16.4 The Inter-Club Championship prize will be presented with the series prizes.

17. RISK STATEMENT

17.1 RRS 3 states: “The responsibility for a boat’s decision to participate in a race or to continue racing is hers alone”.

17.2 Sailing is by its nature an unpredictable sport and therefore inherently involves an element of risk. By taking part in the event, each competitor agrees and acknowledges that:

- (a) they are aware of the inherent element of risk involved in the sport and accept responsibility for the exposure of themselves, their crew and their boat to such inherent risk whilst taking part in the event;
- (b) they are responsible for the safety of themselves, their crew, their boat and their other property whether afloat or ashore;
- (c) they accept responsibility for any injury, damage or loss to the extent caused by their own actions and omissions;
- (d) their boat is in good order, equipped to sail in the event and they are fit to participate;
- (e) provision of a race management team, patrol boats and other officials and volunteers by the event organiser does not relieve them of their own responsibilities;
- (f) provision of patrol boat cover is limited to such assistance, particularly in extreme weather conditions, as can be practically provided in the circumstances.
- (g) it is their responsibility to familiarise themselves with any risks specific to this venue or event drawn to their attention in any rules and information produced for the venue or event and to attend any safety briefing held for the event.

17.3 The fact that the race committee conducts inspections of a boat does not reduce the responsibilities of each competitor set out in these sailing instructions.

18. INSURANCE

Each participating boat shall be insured with valid third-party liability insurance with a minimum cover of £3,000,000 per event, or the equivalent.

SECTION 2 - REGATTA COURSES FOR THE FIREBIRD CLASS (ALL DAYS EXCEPT WEDNESDAY)

19. INTRODUCTION

19.1 The sailing instructions in this section will apply to the regatta courses sailed by the Firebird class only on all days except Wednesday.

19.2 The Firebird class will not sail on the trapezoid course.

20. SCHEDULE OF RACES

20.1 The warning signal for the race on Sunday, Monday and Tuesday will not be before 1055.

20.2 On Thursday, Friday and Saturday the warning signal for the first race of the day will not be before 1025. For warning signal for the second race of the day will be displayed as soon as possible after the preceding race has finished.

21. RACING AREA

The race area is Falmouth Bay.

22. THE COURSES

22.1 The course to be sailed will be selected from the list at Addendum A.

22.2 The descriptions and approximate positions of the marks of the courses are at Addendum C.

22.3 Courses, and the range and approximate bearing of mark WX, (if laid), will be announced on VHF Ch. 72. Failure to receive a broadcast will not be grounds for a request for redress. This changes RRS 62.1(a).

23. CHANGE TO A LEG OF THE COURSE

No leg of the course will be changed.

24. THE FINISH

The normal finishing line will be between the mast on an official vessel displaying an orange flag and the last mark of the course. If no official vessel is present then boats shall pass within one boat length of the mark, or within one boat length of a boat overlapped inside them, and record their own position which shall be passed to the race committee on VHF Ch. 72.

25. TARGET TIME AND TIME LIMITS

25.1 The Target Time for each race is 75 minutes, the Race Time Limit is 100 minutes and the Finishing Window is 35 minutes.

25.2 The Finishing Window is the time for boats to finish after the first boat sails the course and finishes. Boats failing to finish within the Finishing Window, and not subsequently retiring, penalized or given redress, will be scored Time Limit Expired (TLE) without a hearing. A boat scored TLE shall be scored points for the finishing place one more than the points scored by the last boat that finished within the Finishing Window. This changes RRS 35, A5.1, A5.2 and A10.

25.3 Failure to meet the Target Time will not be grounds for redress. This changes RRS 62.1(a).

25.4 The time for the first boat to finish may be broadcast on VHF Ch. 72. Failure to make a broadcast will not be grounds for a request for redress. This changes RRS 62.1(a).

26. AREAS THAT ARE OBSTRUCTIONS

26.1 Once boats have completed the first leg of the course they are to treat the area bounded by the trapezoid course area (see the course diagram at Addendum E for the approximate positions of the marks concerned) as an obstruction.

26.2 All boats are to sail to seaward of August Rock starboard lateral mark (approximate position: 50° 06.12' N, 005° 05.01' W).

SECTION 3 – TRAPEZOID COURSES

27. SCHEDULE OF RACES

27.1 Classes will start in the following sequence: IRC 1, IRC 2, E, IRC 3, U, Q.

27.2 The warning signal for the first class to start will not be before 1105 on Sunday, Monday and Tuesday, and will not be before 1035 on Thursday, Friday and Saturday, i.e. there will be a five minute interval between the starting signal for the Firebird class and the warning signal for the IRC 1 start. On Thursday, Friday and Saturday, warning signals for subsequent races will be displayed as soon as possible.

27.3 The race committee may alter the class start sequence from that shown or amalgamate or split classes into more divisions in the light of entries received at the start of the event.

28. RACING AREA

The race area is Falmouth Bay.

29. THE COURSES

29.1 The diagram in Addendum E shows the course, the order in which marks are to be passed, and the side on which each mark is to be left.

29.2 Courses and the range and bearing of the first windward mark will be announced on VHF Ch. **72**. Failure to receive a broadcast will not be grounds for a request for redress. This changes RRS 62.1(a).

29.3 Marks 3s and 4s may not be laid. When only one gate mark is laid then boats shall round it to port.

30. MARKS

The marks will be MarkSetBot robotic self-positioning marks (see Addendum F).

31. CHANGE TO A LEG OF THE COURSE

To change the next leg of the course, the existing MarkSetBot will be re-positioned (or move the finishing line). The race committee will broadcast details of a change to a leg of the course on VHF Ch. **72**. This changes RRS 33 which is deleted. Failure to receive a broadcast will not be grounds for redress. This changes RRS 62.1(a).

32. THE FINISH

32.1 The finish will be located as shown in Addendum E.

32.2 The finishing line will be between the mast on the finish vessel, displaying a blue flag, and a MarkSetBot robotic self-positioning mark (see Addendum F).

33. TARGET TIME AND TIME LIMIT

33.1 The Target Time for each race is 75 minutes, the Race Time Limit is 100 minutes and the Finishing Window is 35 minutes.

33.2 The Finishing Window is the time for boats in a class to finish after the first boat in that class sails the course and finishes. Boats failing to finish within the Finishing Window, and not subsequently retiring, penalized or given redress, will be scored Time Limit Expired (TLE) without a hearing. A boat scored TLE shall be scored points for the finishing place one more than the points scored by the last boat that finished within the Finishing Window. This changes RRS 35, A5.1, A5.2 and A10.

33.3 Failure to meet the Target Time will not be grounds for redress. This changes RRS 62.1(a).

33.4 The time for the first boat in a class to finish may be broadcast on VHF Ch. **72**. Failure to make a broadcast will not be grounds for a request for redress. This changes RRS 62.1(a).

SECTION 4 - REGATTA COURSES - ALL CLASSES EXCEPT FIREBIRDS, ON ALL DAYS EXCEPT WEDNESDAY

34. INTRODUCTION

34.1 The sailing instructions in this section will apply to the regatta courses sailed by all classes except the Firebird class, on all days except Wednesday.

34.2 B class (Large Working Boats), which normally race in the Carrick fleet, may sail their race on Sunday with the Bay fleet, weather permitting. A separate sailing instruction will be issued for this class.

35. SCHEDULE OF RACES

35.1 The warning signal for the first class to start will not be before 1315.

35.2 Classes will start in the following order:

(a) Sunday: IRC 1, IRC 2, IRC 3, E, Q, U, B class working boats.

(b) All other days except Wednesday: IRC 1, IRC 2, IRC 3, E, Q, U.

36. RACING AREA

The race area is Falmouth Bay. On Sunday only the race area may include the mouth of the Helford River, approximately as far as Mawnan Shear (50° 05.99' N, 005° 06.00' W).

37. THE COURSES

37.1 For all races except the race on Sunday, courses will be selected from the list at Addendum A.

37.2 For the race on Sunday only, courses will be selected from the list at Addendum B.

37.3 The descriptions and approximate positions of the marks of the courses are at Addendum C.

37.4 Courses, and the range and approximate bearing of mark WX, (if laid), will be announced on VHF Ch. 72. Failure to receive a broadcast will not be grounds for a request for redress. This changes RRS 62.1(a)

38. CHANGE TO A LEG OF THE COURSE

No leg will be changed.

39. THE FINISH

39.1 For all classes in the second race on Sunday, the finishing line will be in the mouth of the Helford River, between the mast on the signals vessel displaying an orange flag and a MarkSetBot robotic self-positioning mark (See Addendum F).

39.2 For all classes on Monday and Tuesday, the finishing line will be on the west side of Pendennis Point between the mast on the signals vessel displaying an orange flag and a MarkSetBot robotic self-positioning mark (See Addendum F).

40. TARGET TIME AND TIME LIMIT

40.1 The Target Time for each race is 75 minutes, the Race Time Limit is 100 minutes and the Finishing Window is 35 minutes.

40.2 The Finishing Window is the time for boats to finish after the first boat sails the course and finishes. Boats failing to finish within the Finishing Window, and not subsequently retiring, penalized or given redress, will be scored Time Limit Expired (TLE) without a hearing. A boat scored TLE shall be scored points for the finishing place one more than the points scored by the last boat that finished within the Finishing Window. This changes RRS 35, A5.1, A5.2 and A10.

40.3 Failure to meet the Target Time will not be grounds for redress. This changes RRS 62.1(a).

40.4 The time for the first boat in a class to finish may be broadcast on VHF Ch. 72. Failure to make a broadcast will not be grounds for a request for redress. This changes RRS 62.1(a).

41. AREAS THAT ARE OBSTRUCTIONS

All boats shall sail to seaward of August Rock starboard lateral mark (approximate position: 50° 06.12' N, 005° 05.01' W).

SECTION 5 – ANCASTA CHAMPAGNE AND FIREBIRD LONG-DISTANCE RACES

42. SCHEDULE OF RACES

42.1 Classes will start in the following order: Firebirds, IRC 1, E, IRC 2, IRC 3, Q, U.

42.2 The warning signal for the Firebirds will not be before 1025. There will be a five-minute interval between the starting signal for the Firebird class and the warning signal for the IRC 1 start.

42.3 The race committee may alter the class start sequence from that shown or amalgamate or split classes into more divisions in the light of entries received at the start of the event.

43. RACING AREA

The race area is Falmouth Bay and Gerrans Bay, as shown in Addendum C.

44. THE COURSES

44.1 Courses will be selected from the list at Addendum D.

44.2 The descriptions and approximate positions of the marks of the courses are listed in Addendum C.

44.3 Courses, and the range and approximate bearing of mark WX, (if laid), will be announced on VHF Ch. 72. Failure to receive a broadcast will not be grounds for a request for redress. This changes RRS 62.1(a).

45. CHANGE TO THE NEXT LEG OF THE COURSE

No leg will be changed.

46. THE FINISH

The finish will be on the west side of Pendennis Point, between the mast on a committee vessel displaying an orange flag and MarkSetBot robotic self-positioning mark (see Addendum F).

47. TARGET TIME AND TIME LIMIT

47.1 For the Firebird class, the Target Time is 2 hours, the Race Time Limit is 2 hours 30 minutes and the Finishing Window is 3 hours.

47.2 For all other classes, the Target Time is 4 hours, the Race Time Limit is 5 hours and the Finishing Window is 60 minutes.

47.3 The Finishing Window is the time for boats to finish after the first boat sails the course and finishes. Boats failing to finish within the Finishing Window, and not subsequently retiring, penalized or given redress, will be scored Time Limit Expired (TLE) without a hearing. A boat scored TLE shall be scored points for the finishing place one more than the points scored by the last boat that finished within the Finishing Window. This changes RRS 35, A5.1, A5.2 and A10.

47.4 Failure to meet the Target Time will not be grounds for redress. This changes RRS 62.1(a).

47.5 The time for the first boat in a class to finish may be broadcast on VHF Ch. 72. Failure to make a broadcast will not be grounds for a request for redress. This changes RRS 62.1(a).

ADDENDUM A: REGATTA COURSES FOR ALL REGATTA COURSE RACES EXCEPT THE SECOND RACE ON SUNDAY

The table shows the group of courses to be used for a given wind direction, and the courses in that group.

All marks are to be passed to port unless otherwise shown; for example, R(s) means pass Romeo to starboard; PH means pass Papa Hotel to port.

FOR ALL GROUPS, COURSE 9 IS AT THE RACE OFFICER'S DISCRETION; SEQUENCE OF MARKS TO BE ANNOUNCED BY VHF.

								Approx distance (nm)	
GROUP 1		NORTH				Start area: near mark R			
1	GY	R	GY	M	C	A	Finish	10	
2	GY	M	PH	C	A		Finish	9	
3	GY	M	R	C	A	C	A	Finish	9
4	GY	PH	A				Finish	8	
5	GY	R	GY	M	A		Finish	8	
6	GY	M	R	C	A		Finish	7	
7	GY	R	C	A			Finish	6	
GROUP 2		NORTH WEST				Start area: near mark C			
1	GY	M	C	GY	M	C	A	Finish	10
2	GY	M	H	A			Finish	9	
3	WX	M	H	A			Finish	8	
4	WX	M	C	WX	M	C	A	Finish	8
5	GY	R	C	A			Finish	7	
6	GY	M	C	A			Finish	6	
GROUP 3		WEST				Start area: near mark C			
1	M	R	C	M	R	C	A	Finish	11
2	M	R	C	M	C	A		Finish	10
3	M	R	OW	C	OW	A		Finish	9
4	M	R	GY	C	A		Finish	8	
5	M	R	OW	A			Finish	7	
6	M	R	C	A			Finish	6	
GROUP 4		SOUTH WEST				Start area: near mark A			
1	N	C	A	R	A		Finish	12	
2	N	A	R	A			Finish	10	
3	R	C	A	R	A		Finish	9	
4	R	A	R	A			Finish	8	
5	N	A					Finish	7	
6	WX	A	WX	C	A		Finish	6	
GROUP 5		SOUTH				Start area: near mark GY			
1	P	C	R	P	A		Finish	11	
2	P	OW	A	C	A		Finish	10	
3	R	C	GY	R	C	A	Finish	9	
4	P	OW	A				Finish	8	
5	R	GY	R	A			Finish	7	
6	R	OW	A				Finish	6	

continued on next page

GROUP 6		SOUTH EAST				Start area: near mark GY				
1	C(s)	PH(s)	GY(s)	C(s)	GY(s)	A		Finish	11	
2	C(s)	R(s)	GY(s)	C(s)	GY(s)	A		Finish	9	
3	C(s)	PH(s)	GY(s)	A				Finish	8	
4	C(s)	GY(s)	C(s)	GY(s)	A			Finish	7	
5	C(s)	M(s)	GY(s)	A				Finish	6	
6	B(s)	C(s)	A					Finish	6	
GROUP 7		EAST				Start area: near mark M				
1	OW(s)	H(s)	R(s)	C(s)	R(s)	A		Finish	12	
2	OW(s)	H(s)	R(s)	A				Finish	9	
3	OW(s)	B(s)	R(s)	A				Finish	8	
4	OW(s)	R(s)	A					Finish	7	
5	OW(s)	C(s)	GY(s)	A				Finish	6	
6	OW(s)	C(s)	A					Finish	5	
GROUP 8		NORTH EAST				Start area: near mark R				
1	A	GY	M	R	A	GY	R	A	Finish	11
2	A	GY	N	C	A				Finish	10
3	A	GY	PH	C	A				Finish	9
4	A	M	R	A					Finish	7
5	A	GY	R	A					Finish	7
6	A	R	A						Finish	6

ADDENDUM B: COURSES FOR THE SECOND RACE ON SUNDAY

The table shows the group of courses to be used for a given wind direction, and the courses in that group.

All marks are to be passed to port unless otherwise shown; for example, R(s) means pass Romeo to starboard; PH means pass Papa Hotel to port.

FOR ALL GROUPS, COURSE 9 IS AT THE RACE OFFICER'S DISCRETION; SEQUENCE OF MARKS TO BE ANNOUNCED BY VHF.

GROUP 1							Approx distance (nm)
NORTH							
Start area: near mark R							
1	GY	M	C(s)	PH(s)		Finish	9
2	GY	M	C(s)			Finish	8
3	GY	M	R	M		Finish	7
4	GY	M	C(s)			Finish	7
5	GY	M	PH(s)	N(s)		Finish	7
6	GY	M	PH(s)			Finish	6
GROUP 2							
NORTH WEST							
Start area: near mark C							
1	GY	M	C(s)	PH(s)	R	Finish	9
2	GY		C(s)	M	PH(s)	Finish	8
3	GY		PH(s)	R		Finish	7
4	GY		C(s)	M		Finish	7
5	GY		M	PH(s)		Finish	6
6	GY		M			Finish	5
GROUP 3							
WEST							
Start area: near mark C							
1	M(s)	GY(s)	PH(s)	R		Finish	9
2	M(s)	GY(s)	A(s)	R	PH(s)	Finish	8
3	M(s)	A(s)	PH(s)	N(s)		Finish	8
4	M(s)	GY(s)	PH(s)			Finish	7
5	M(s)	C(s)				Finish	6
GROUP 4							
SOUTH WEST							
Start area: near mark A							
1	R(s)	GY(s)	C(s)	PH(s)		Finish	9
2	R(s)	M(s)	C(s)	PH(s)		Finish	8
3	R(s)	A(s)				Finish	7
4	R(s)	M(s)	PH(s)			Finish	7
5	PH(s)	N(s)				Finish	5
GROUP 5							
SOUTH							
Start area: near mark GY							
1	MC(s)	N(s)				Finish	9
2	PH(s)	M	N(s)			Finish	8
3	PH(s)	R	N(s)			Finish	7
4	PH(s)	N(s)				Finish	5
GROUP 6							
SOUTH EAST							
Start area: near mark GY							
1	C(s)	MC(s)	N(s)			Finish	10
2	C(s)	M	PH(s)	N(s)		Finish	8
3	C(s)	R	PH(s)	N(s)		Finish	6
4	C(s)	PH(s)	N(s)			Finish	5
GROUP 7							
EAST							
Start area: near mark M							
1	OW(s)	B(s)	H(s)	PH(s)	N(s)	Finish	9
2	C(s)	B(s)	H(s)	PH(s)	N(s)	Finish	8
3	OW(s)	R	PH(s)	N(s)		Finish	8
4	C(s)	R	PH(s)	N(s)		Finish	7
5	C(s)	H(s)	PH(s)	N(s)		Finish	7
6	C(s)	N(s)				Finish	5
GROUP 8							
NORTH EAST							
Start area: near mark R							
1	A(s)	MC(s)	N(s)			Finish	11
2	A(s)	R(s)	M(s)	PH(s)	N(s)	Finish	9
3	A(s)	PH(s)	N(s)			Finish	7
4	A(s)	OW(s)	PH(s)	N(s)		Finish	7
5	A(s)	N(s)				Finish	6

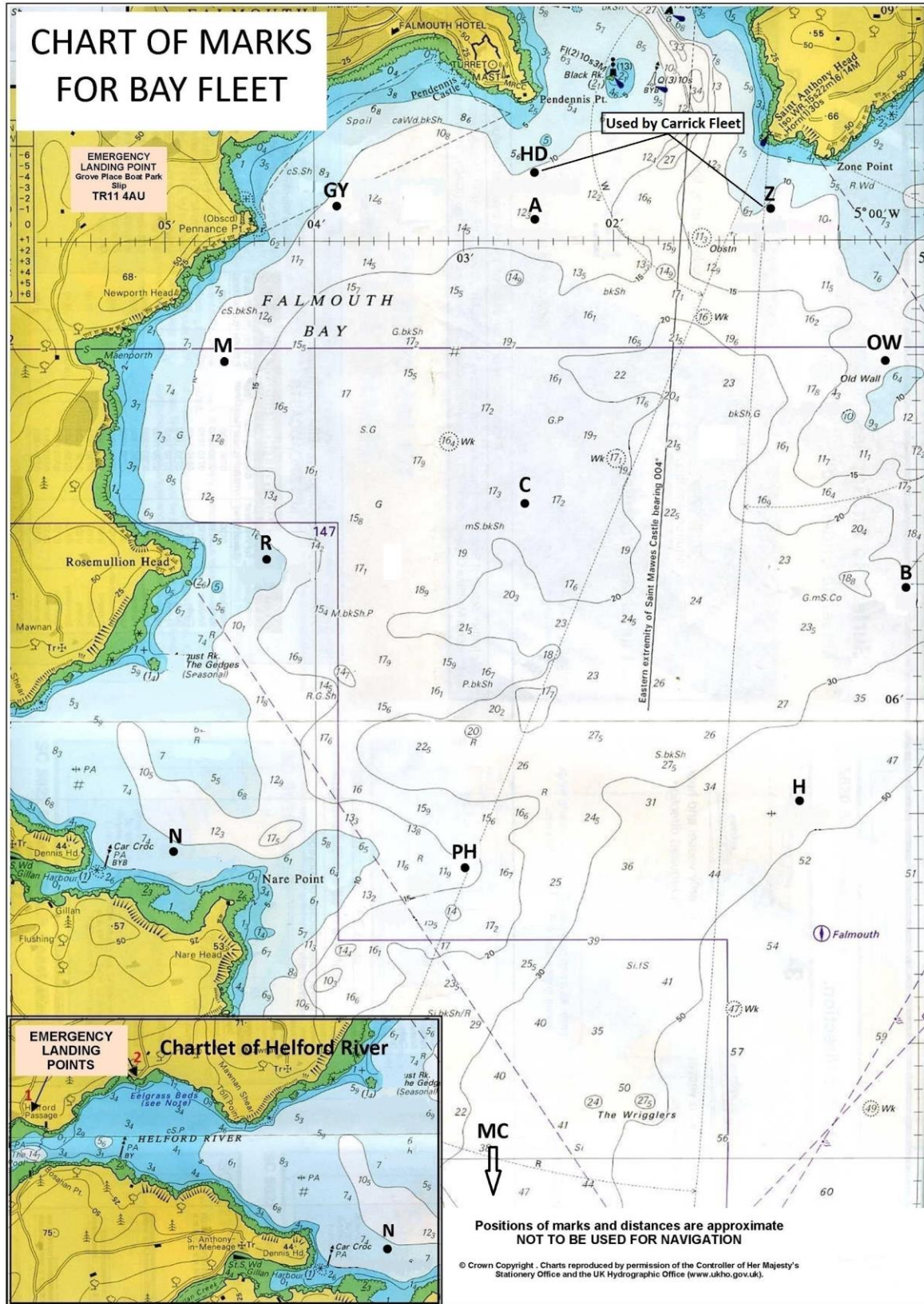
ADDENDUM C: REGATTA AND ANCASTA CHAMPAGNE AND FIREBIRD LONG-DISTANCE RACES MARK DESCRIPTIONS AND CHARTLETS

ATTENTION: THE POSITIONS OF OW, C, PH, R, M & GY HAVE CHANGED FROM 2023

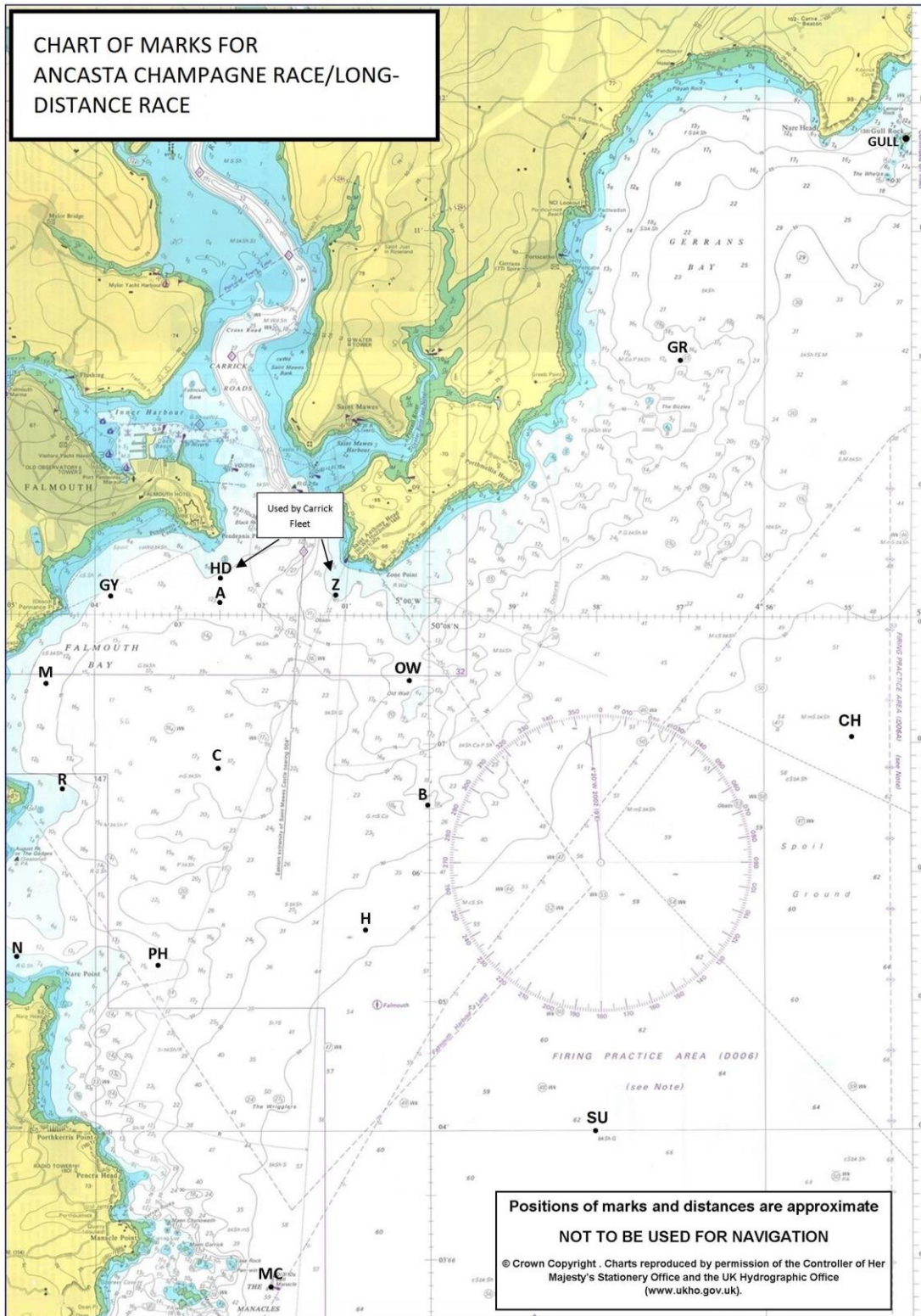
MARK DESCRIPTIONS

CODE	SPONSOR OR NAME	DESCRIPTION	LAT	LONG
A		Orange Inflatable	50° 08.10' N	005° 02.50' W
B		Yellow Spherical with code	50° 06.50' N	005° 00.00' W
C		Yellow spherical with code	50° 06.77' N	005° 02.42' W
GY	Penryn Dental Practice	Yellow Spherical with code	50° 08.12' N	005° 03.87' W
H		Yellow Spherical with code	50° 05.55' N	005° 00.75' W
HD	Hine Downing	Yellow Spherical with code	50° 08.39' N	005° 02.76' W
M	SW Ventilation	Yellow Spherical with code	50° 07.46' N	005° 04.67' W
MC	Manacles	East Cardinal Buoy	50° 02.81' N	005° 01.91' W
N	Gweek Boatyard	Yellow Spherical with code	50° 05.36' N	005° 04.91' W
OW		Yellow Spherical with code	50° 07.50' N	005° 00.21' W
PH		Yellow Spherical with code	50° 05.25' N	005° 03.19' W
R	Heather and Lay	Yellow Spherical with code	50° 06.61' N	005° 04.36' W
WX		MarkSetBot robotic self-positioning mark (see Addendum F)	May be laid mark to windward of the start line	
Z	Falmouth Boat Co	Yellow Spherical with code	50° 08.15' N	005° 01.10' W
ADDITIONAL MARKS FOR THE ANCASTA CHAMPAGNE AND FIREBIRD LONG-DISTANCE RACES				
CH	Channel	GPS virtual mark	50° 07.70' N	004° 55.30' W
GR	Greeb	Yellow Spherical with code or GPS virtual mark	50° 10.00' N	004° 57.00' W
GU	Gull Rock	Prominent islet	50° 11.72' N	004° 54.32' W
SU	Submarine	GPS virtual mark	50° 04.00' N	004° 58.00' W

CHARTLET FOR BAY REGATTA COURSES



CHARTLET FOR THE ANCASTA CHAMPAGNE AND FIREBIRD LONG-DISTANCE RACES



ADDENDUM D: COURSES FOR THE ANCASTA CHAMPAGNE AND FIREBIRD LONG-DISTANCE RACES ON WEDNESDAY

The table shows the group of courses to be used for a given wind direction, and the courses in that group. **All marks are to be passed to port unless otherwise shown; for example, R(s) means pass Romeo to starboard; PH means pass Papa Hotel to port.**

FOR ALL GROUPS, COURSE 9 IS AT THE RACE OFFICER'S DISCRETION; SEQUENCE OF MARKS TO BE ANNOUNCED BY VHF.

										Approx distance (nm)	
GROUP 1 NORTH Start area: near mark C											
1	A	GY	MC	A	PH	H	OW	A	Finish	23	
2	A	GY	MC	C	PH	H	A		Finish	20	
3	A	GY	PH	H	A	GY	PH	C	A	Finish	18
4	A	GY	MC	B	OW	B	OW	A		Finish	17
5	A	GY	PH	C	A	GY	H	A		Finish	16
6	A	GY	MC	H	A					Finish	14
7	A	GY	N	PH	H	B	OW	A		Finish	12
GROUP 2 NORTHWEST Start area: near mark C											
1	GY	MC	GR	PH(s)	N(s)	A			Finish	27	
2	GY	H	GR	PH(s)	N(s)	A			Finish	22	
3	GY	H	GR	C(s)	A				Finish	17	
4	GY	MC	H	PH(s)	A				Finish	15	
5	GY	MC	A						Finish	13	
6	GY	PH	R(s)	H	A				Finish	12	
GROUP 3 WEST Start area: near mark OW											
1	M	MC	GULL	C(s)	A				Finish	27	
2	M	MC	GR	C(s)	A				Finish	22	
3	M	MC	H	PH(s)	B	C(s)	A		Finish	17	
4	M	H(s)	PH(s)	B	C(s)	A			Finish	14	
5	M	MC	H	C(s)	A				Finish	15	
6	M	R(s)	N	H	C(s)	A			Finish	12	
GROUP 4 SOUTH WEST Start area: near mark C											
1	P	GULL(s)	H(s)	A					Finish	23	
2	P	GULL(s)	OW(s)	A					Finish	20	
3	P	H	GR	C(s)	R(s)	A			Finish	18	
4	P	H	GR	C(s)	A				Finish	16	
5	P	MC	H	C(s)	A				Finish	13	
6	P	MC	H	R(s)	A				Finish	13	
7	P	MC	OW	C(s)	A				Finish	12	
GROUP 5 SOUTH Start area: near mark GY											
1	MC	GULL	A						Finish	23	
2	MC	GR	B(s)	A					Finish	20	
3	MC	GR	A						Finish	18	
4	PH	GR	OW(s)	A					Finish	15	
5	PH	GY	PH	A					Finish	14	
6	PH	C	PH	C	A				Finish	12	
7	PH	H	C	H	A				Finish	12	
GROUP 6 SOUTH EAST Start area: near mark GY											
1	H(s)	R	MC	B	M	C	A		Finish	22	
2	H(s)	R	MC	B	P	C	A		Finish	21	
3	H(s)	R	PH	OW	N	C	A		Finish	18	
4	H(s)	R	MC	C	A				Finish	16	
5	H(s)	R	P	C	A				Finish	12	

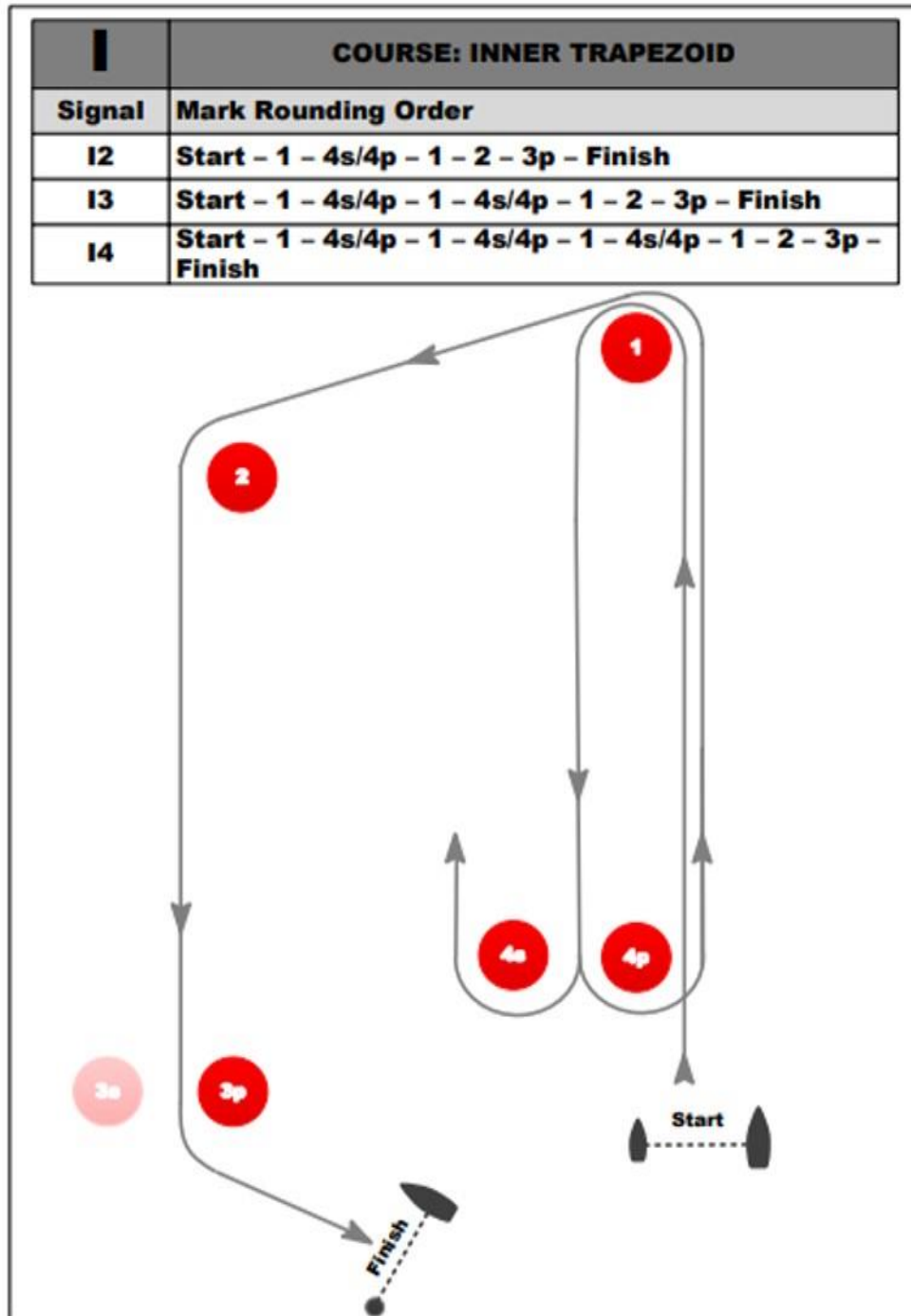
continued on next page

GROUP 7		EAST				Start area: near mark R				
1	OW	GULL(s)	MC(s)	A						25
2	OW	GULL(s)	H(s)	A						20
3	OW	GR(s)	MC(s)	A						20
4	OW	GY	N	B	M	R	A			18
5	OW	GR(s)	H(s)	A						15
6	OW	GY	R	OW	M	R	A			15
7	OW	GY	R	B	A					13
GROUP 8		NORTH EAST				Start area: near mark R				
1	GULL	MC	C	A					Finish	23
2	GR	MC	C	A					Finish	21
3	GULL	PH	C	A					Finish	20
4	GR	PH	C	A					Finish	17
5	GR	OW	A						Finish	15
6	GR	C	A						Finish	14

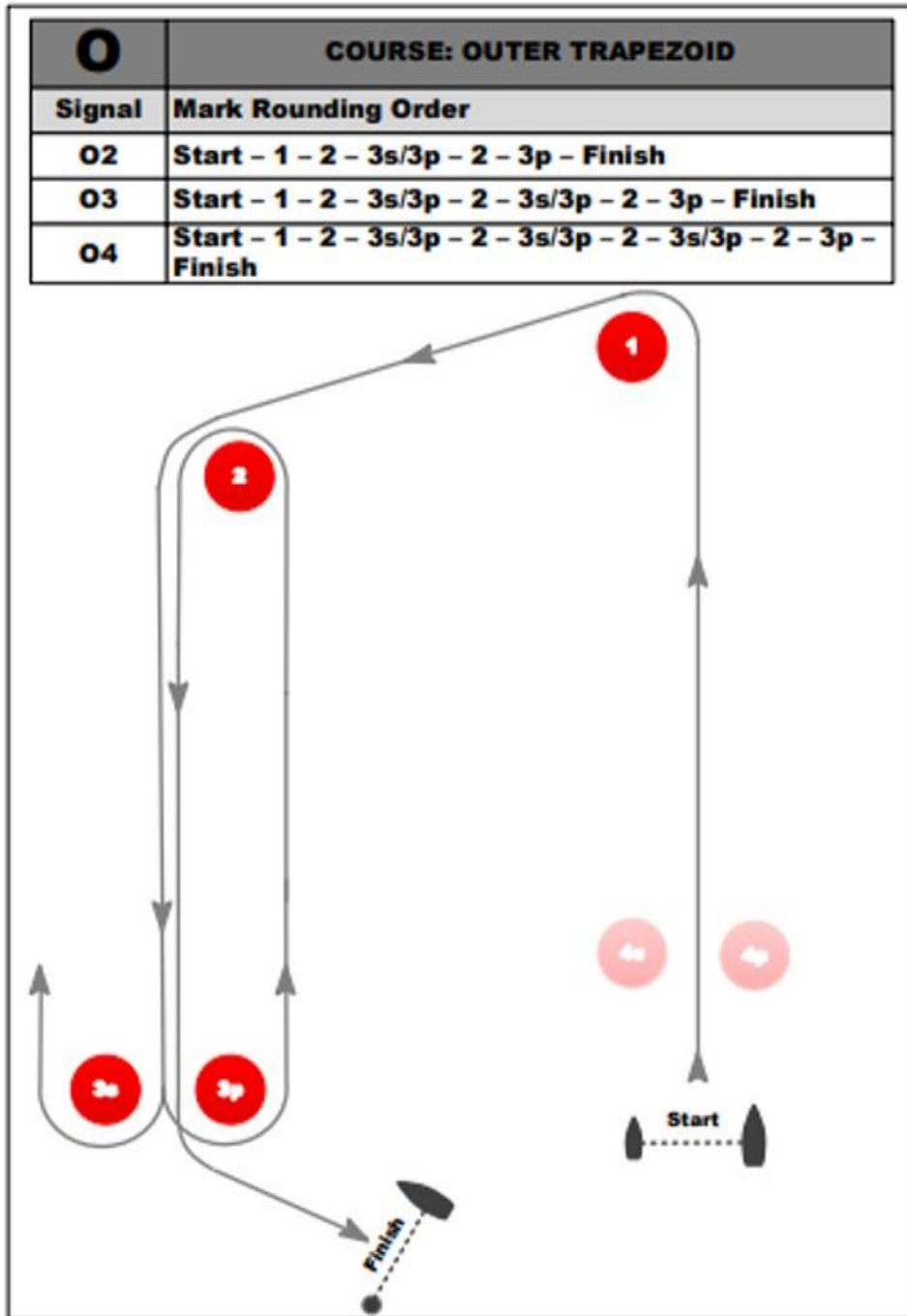
ADDENDUM E: TRAPEZOID COURSE DIAGRAM AND COURSES

- Course diagrams are not to scale and are indicative diagrams only.
- Marks 3s and 4s may not be laid. When only one gate mark is laid then boats shall round it to port.
- Internal angle: approximately 60°.
- Marks may be moved by not more than 200m and/or 15 degrees without signalling.

INNER COURSE DIAGRAM AND COURSES (not to scale; indicative diagram only)



OUTER COURSE DIAGRAM AND COURSES (not to scale; indicative diagram only)



ADDENDUM F: ROBOTIC SELF-POSITIONING MARKS

The start line and finish line outer limit marks, and the course marks of the trapezoid courses, will be MarkSetBot robotic self-positioning marks.

In addition, a MarkSetBot will be laid as the finish line outer limit mark, and may be laid as the first windward mark, of a regatta course.

An example of a MarkSetBot is shown in the picture below. The marks may display sponsor's advertising and may be a different colour to the picture.



Mark sponsors are:

- Fal and Helford Marine Protection Area (x2 marks)
- Mylor Rigging and Chandlery
- Marlow Ropes
- Cornish Lithium
- Pendennis Shipyard Ltd

NOT PART OF THE SAILING INSTRUCTIONS

QR CODE TO JOIN THE BAY FLEET WHATSAPP GROUP

1. Open WhatsApp, tap Camera
2. Hold device over the QR code to scan (adjust distance so QR code fits the screen)
3. Tap ADD

