

# FALMOUTH SAILING WEEK 2023

Saturday 5<sup>th</sup> to Saturday 12<sup>th</sup> August

Organising Authority: Port of Falmouth Sailing Association (PoFSA)

(Website: [www.falmouthweek.co.uk/sailing-week](http://www.falmouthweek.co.uk/sailing-week))

## SAILING INSTRUCTIONS FOR THE BAY FLEET including the ANCASTA Champagne and Long-Distance Races

### PREAMBLE

These Sailing Instructions (SIs) are divided into four sections:

Section 1 applies to all racing.

Section 2 (beginning with SI 19) applies to the Windward/Leeward courses on all days except Wednesday 9<sup>th</sup> August.

Section 3 (beginning with SI 28) applies to Regatta courses for the Firebird class on all days except Wednesday 9<sup>th</sup> August.

Section 4 (beginning with SI 36) applies only to the Champagne Race and Long-Distance Race on Wednesday 9<sup>th</sup> August.

Abbreviations:

[NP] - A breach of this rule will not be grounds for protest by a boat.

[DP] - Rules for which the penalties are at the discretion of the protest committee.

### SECTION 1 - ALL RACING

#### 1. RULES

**1.1** The regatta will be governed by the rules as defined in *The Racing Rules of Sailing*. The following racing rules are changed:

RRS	SI
27.3	9.9
33	23.1
35	27.2, 34.2, 41.3
61.1(a)(2)	11.1
62.1(a)	2.2, 3.3, 3.4, 9.6, 21.3, 27.3, 27.4, 31.2, 34.3, 34.4, 44.1, 44.5
A5.1	9.8, 27.2, 34.2, 42.2
A5.2	9.8, 27.2, 34.2, 42.2
A10	27.2, 34.2, 41.3

**1.2** RRS 40.1 applies to Firebird catamarans at all times while afloat.

**1.3** RRS 37 does not apply.

**1.4** IRC Rules 2023 Parts A, B and C apply, except that:

- (a) [DP] IRC rule 21.1.5(e) is amended. The use of a spare mainsail will be allowed so long as it is carried onboard at all times while racing.
- (b) [DP] For the purpose of IRC rules 21.1.5 (d) and (e) this regatta is on consecutive days and the sails carried shall remain the same.
- (c) [DP] IRC rule 22.4.2 is changed: the number of crew shall not exceed the number printed on the certificate plus two.

**1.5** [DP] The World Sailing Offshore Special Regulations 2022 – 2023 Appendix B - Inshore Racing apply.

**1.6** [DP] World Sailing Appendix WP – Rules for Waypoints applies.

## **2. CHANGES TO THE SAILING INSTRUCTIONS**

- 2.1** Any change to the sailing instructions will be posted before 0900 hrs on the day it will take effect, except that any change to the schedule of races will be posted by 2030 hrs on the day before it will take effect.
- 2.2** [NP] Oral changes on the water to these sailing instructions shall be broadcast on VHF Ch. 72. Failure to receive such broadcasts will not be grounds for redress. This changes RRS 62.1(a).

## **3. COMMUNICATIONS WITH COMPETITORS**

- 3.1** Notices to competitors will be posted on the official notice board located on the Falmouth Week website at [www.falmouthweek.co.uk/race-management](http://www.falmouthweek.co.uk/race-management).
- 3.2** [NP] On the water, the race committee intends to monitor and communicate with competitors on VHF Ch. 72.
- 3.3** All starting, postponement, abandonment, shortening and recall signals, the course to be sailed and the count down, will, where possible, be broadcast by the race committee on VHF Ch 72. Failure to make a broadcast or to time it accurately, and failure to receive such broadcasts, shall not be grounds for a request for redress. This changes RRS 62.1(a).
- 3.4** Changes to finishing window times and the time of the first boat in a class to finish may be broadcast by the race committee on VHF Ch 72. Failure to receive such broadcasts will not be grounds for redress. This changes RRS 62.1(a).
- 3.5** [DP] While racing, except in an emergency, a boat shall not make voice or data transmissions and shall not receive voice or data communications that are not available to all boats.
- 3.6** The race committee may use email and WhatsApp to alert competitors to notices being posted. The QR code to join the Bay Fleet WhatsApp group is attached to these sailing instructions.

## **4. CODE OF CONDUCT**

- 4.1** [DP] Competitors and support persons shall comply with reasonable requests from race officials.

## **5. SIGNALS MADE ASHORE**

- 5.1** Signals made ashore will be displayed at the Royal Cornwall Yacht Club signal mast, <https://www.royalcornwallyachtclub.org/webcam/> and may be repeated at Mylor Yacht Club, Restronguet Sailing Club and St Mawes Sailing Club.
- 5.2** When flag "AP" is displayed ashore, "1 minute" is replaced with "not less than 75 minutes" in the race signal AP.
- 5.3** When pennant "4", is displayed over a race signal that instruction shall apply to the windward-leeward and regatta fleets in the Bay only.
- 5.4** When pennant "5", is displayed over a race signal that instruction shall apply to the Champagne and Long Distance Race fleets only.

## **6. SCHEDULE OF RACES**

- 6.1** A Skippers' Briefing will take place in the marquee at the Royal Cornwall Yacht Club at 1800 hrs on Saturday 5<sup>th</sup> August.
- 6.2** Racing is scheduled on seven days from Sunday 6<sup>th</sup> to Saturday 12<sup>th</sup> August.
- (a) Firebird class. On Sunday, Monday and Tuesday, this class is scheduled to sail one race per day. On Thursday, Friday and Saturday this class is scheduled to sail two races per day. All races for this class will be on a regatta course. One extra race per day may be sailed, provided that the class does not become more than one race ahead of schedule and the change is made in accordance with SI 2. Races for this class will comprise a six-day series. In addition, races on Thursday, Friday and Saturday will be scored as a three-day series (the Regatta Series).
- (b) IRC and YTC classes. On Sunday, Monday and Tuesday, these classes are scheduled to sail two races per day and both races will be on windward-leeward courses. Races not completed on these days will not be re-sailed and these races will not be part of any series.
- (c) All classes on Wednesday. On Wednesday, IRC classes and YTC classes will sail one race, the Ancasta Champagne Race, on a long regatta course. Other classes will sail a race longer than the normal race as sailed on other days, but not as long as the Ancasta Champagne Race. Any race not completed on Wednesday will not be re-sailed. For the IRC classes, this race will be included in the IRC SW Championship series.

- (d) IRC classes on Thursday, Friday and Saturday. Races sailed on these days will form the IRC SW Championship series. Two windward-leeward races per day are scheduled and any race not completed may be re-sailed.
- (e) YTC classes on Thursday, Friday and Saturday. Races sailed on these days will form the YTC Regatta series. Two windward-leeward races per day are scheduled and any race not completed may be re-sailed.
- (f) The warning signal for the first race for the Bay fleet will not be before 1055, except on Wednesday when it will not be before 1025. The warning signals for subsequent races will be as shown in the relevant sections of these SIs.
- (g) No warning signal shall be made after 1500 on Saturday.

## 7. CLASS FLAGS

7.1 [DP] All boats racing, except the Firebird class, are required to display class flags.

7.2 Class flags for the regatta are:

Class	Class Flag	Class	Class Flag	Class	Class Flag
IRC Div 1	1	YTC Div E	E	Firebirds	F
IRC Div 2	2	YTC Div U	U		

## 8. [DP] OBSTRUCTIONS

8.1 Commercial and military shipping. Commercial and military shipping under way and constricted in their ability to manoeuvre are designated as moving exclusion zones. The exclusion zone extends to 100m on all sides of the vessel and includes tugs, race committee escort vessels and pilot vessels. No boat shall enter the exclusion zone and if becalmed may use any means of propulsion to move out of the way. This should only be sufficient to leave the exclusion zone by the safest possible route and offer the competitor no significant advantage in the race.

8.2 Divers. Exclusion zones extend 25m around a dive vessel displaying code flag A, an inflated orange buoy marking a diver just under the surface, and a diver on the surface. A boat shall not enter the 25m zone.

## 9. THE START

9.1 The race committee signal vessel is the white hulled Juneau 40 sloop "Bibo". The signal vessel will describe its approximate position on VHF Ch.72 approximately 30 minutes before the first scheduled warning signal.

9.2 The starting line will be between the mast on the signal vessel, displaying an orange flag, and a yellow conical inflated buoy.

9.3 For the first class to start, an attention signal (orange flag with one sound signal) will be made five minutes before the warning signal. The race committee will designate the course to be sailed before or with the attention signal.

9.4 A starting inner limit mark (ILM) may be placed off the race committee signal vessel. The ILM will not necessarily lie on the start line.

9.5 [NP][DP] No boat after its preparatory signal shall enter the triangle formed by the bow of the race committee signals vessel on station, the ILM and the stern of the same vessel. The race committee will protest boats breaching this sailing instruction.

9.6 If any part of a boat's hull is on the course side of the starting line during the two minutes before her starting signal and she is identified, the race committee will attempt to broadcast her sail number on VHF. Failure to make a broadcast or to time it accurately will not be grounds for a request for redress. This changes rule 62.1(a).

9.7 [DP] Boats whose warning signal has not been made shall avoid the starting area during the starting sequence of other races.

9.8 A boat starting later than four minutes after her starting signal will be scored Did Not Start without a hearing. This changes RRS A5.1 and A5.2.

9.9 In the event of a general recall, the warning signal for the next class to start will be removed and then re-displayed with the next starting signal of the recalled class. This changes rule 27.3.

## 10. PENALTY SYSTEM

For all classes RRS 44.1 is changed so that the Two-Turns Penalty is replaced by the One-Turn Penalty.

## 11. HEARING REQUESTS

11.1 Boats shall comply with rule 61.1(a) irrespective of their length. This changes rule 61.1(a)(2) which is deleted.

11.2 Hearing request forms are available at the host club of the day or may be downloaded from

<https://www.rya.org.uk/racing/running-racing/templates>. Protests shall be submitted and protest hearings will be held as shown in the table below:

Protests for races on:	Protest time limit	Protest form to be handed to:	Protests will be heard at:	Schedule of protests will be posted at:
Sunday	1800 Sunday	Sailing Secretary, HRSC	MYC on Monday	MYC by 1820 Monday
Monday	1800 Monday	Sailing Secretary, MYC	MYC on Monday	MYC by 1820 Monday
Tuesday	1800 Tuesday	Sailing Secretary, RSC	RSC on Tuesday	RSC by 1820 Tuesday
Wednesday	1800 Thursday	Sailing Office, RCYC	RCYC on Thursday	RCYC by 1820 Thursday
Thursday	1800 Thursday	Sailing Office, RCYC	RCYC on Thursday	RCYC by 1820 Thursday
Friday	1800 Friday	StMSC office	StMSC on Friday	StMSC by 1820 Friday
Saturday	1800 Saturday	Sailing Secretary, FSC	RCYC on Saturday	FSC by 1820 Saturday

**11.3** The protest time limit applies also to protests by the race committee about incidents they observe in the racing area.

**11.4** Adding to RRS 66, if the race signal “N over A” is displayed ashore on the last scheduled day of racing a request for reopening a hearing shall be delivered not later than 30 minutes after the signal is displayed.

**11.5** For any hearing involving an incident at the rounding of a virtual mark, competitors should be prepared to provide electronic evidence of their rounding.

## **12. SCORING**

### **12.1** Firebird Series (Sunday, Monday, Tuesday, Thursday, Friday and Saturday).

The series shall be scored as in the following table:

Classes	Number of races scheduled	Number of races required to constitute a series	No discards	One discard	Two discards
Firebird	9	1	Fewer than 5 races	From 5 to 8 races	More than 8 races

### **12.2** Races on Wednesday, Thursday, Friday and Saturday (the IRC SW Championship Series).

The series shall be scored as in the following table:

Classes	Number of races scheduled	Number of races required to constitute a series	No discards	One discard	Two discards
IRC	7	1	Fewer than 5 races	From 5 to 6 races	More than 6 races

### **12.3** Races on Thursday, Friday and Saturday (the Regatta Series).

The series shall be scored as in the following table:

Classes	Number of races scheduled	Number of races required to constitute a series	No discards	One discard
Firebird	6	1	Fewer than 5 races	5 or more races
YTC	6	1		

In the tables above, “no discards” means that a boat’s series score shall be the sum of her race scores; “one discard” means that a boat’s series score shall be the sum of her race scores

excluding her worst discardable score; “two discards” means that a boat’s series score shall be the sum of her race scores excluding her two worst discardable scores.

#### **12.4 Inter-Club Championship.**

- (a) Boats participating in the Inter-Club Championship shall be scored according to their class series scores in the Regatta Series. Team scores will be calculating by adding the series scores of each boat in the team. The team with the lowest total score wins the championship and others shall be ranked accordingly.
- (b) If there is a tie between two or more teams, then they shall be ranked by their team scores in the last race. If a tie remains then they shall be ranked by their team scores in the next-to-last race and so on until all ties are broken.
- (c) Series scores will be adjusted when classes sail different numbers of races.

### **13. [NP][DP] SAFETY REGULATIONS**

**13.1** SIs 13.2 to 13.4 are in addition to the requirements of NoR regulation 4.4.

**13.2** Competitors who leave the cockpit of a boat not fitted with guardrails shall wear an appropriate personal flotation device.

**13.3** Any boat that retires from a race shall inform the signal vessel, or another official vessel, as soon as possible on VHF Ch.72. If unable to do so, they shall inform the race office by telephone (07775 574308) at the first opportunity.

**13.4** Competitors requiring assistance from a patrol vessel should call “Bay Safety Control” on VHF Ch. 72.

### **14. EQUIPMENT AND MEASUREMENT CHECKS**

**14.1** A boat or equipment may be inspected at any time for compliance with the class rules, notice of race and sailing instructions.

**14.2** [DP] When instructed by a race official on the water, a boat shall proceed to a designated area for inspection.

### **15. HAUL OUT RESTRICTIONS**

Boats shall not be hauled out during the regatta except with and according to the terms of prior written permission of the race committee.

### **16. PRIZES**

**16.1** Prizes will be awarded in accordance with the Notice of Race.

**16.2** Daily prizes will be presented at approximately 1815 as follows:

Sunday	Helford River SC (including B class if it races with the Bay fleet)
Monday	Mylor YC
Tuesday	Restronguet SC
Wednesday	No prize-giving
Thursday	Royal Cornwall YC (including the prizes for Wednesday)
Friday	StMawes SC
Saturday	Flushing SC

Daily presentations will be preceded by a traditional regatta tea for all competitors.

**16.3** Series prizes will be presented on Saturday at Flushing Sailing Club at approximately 1900, following the daily prizegiving.

**16.4** The Inter-club Championship prize will be presented with the series prizes.

### **17. RISK STATEMENT**

**17.1** RRS 3 states: “The responsibility for a boat’s decision to participate in a race or to continue racing is hers alone”.

**17.2** Sailing is by its nature an unpredictable sport and therefore inherently involves an element of risk. By taking part in the event, each competitor agrees and acknowledges that:

- (a) they are aware of the inherent element of risk involved in the sport and accept responsibility for the exposure of themselves, their crew and their boat to such inherent risk whilst taking part in the event;
- (b) they are responsible for the safety of themselves, their crew, their boat and their other property whether afloat or ashore;
- (c) they accept responsibility for any injury, damage or loss to the extent caused by their own actions and omissions;
- (d) their boat is in good order, equipped to sail in the event and they are fit to participate;
- (e) provision of a race management team, patrol boats and other officials and volunteers by the event organiser does not relieve them of their own responsibilities;

- (f) provision of patrol boat cover is limited to such assistance, particularly in extreme weather conditions, as can be practically provided in the circumstances.
- (g) it is their responsibility to familiarise themselves with any risks specific to this venue or event drawn to their attention in any rules and information produced for the venue or event and to attend any safety briefing held for the event.

**17.3** The fact that the race committee conducts inspections of a boat does not reduce the responsibilities of each competitor set out in these sailing instructions.

**18. INSURANCE**

Each participating boat shall be insured with valid third-party liability insurance with a minimum cover of £3,000,000 per event, or the equivalent.



## SECTION 2 – WINDWARD-LEEWARD AND SAUSAGE-TRIANGLE COURSES

### 19. SCHEDULE OF RACES

**19.1** Classes will start in the following sequence: IRC 1, E, IRC 2, U.

**19.2** The warning signal for the first class to start will not be before 1105. The warning signal for subsequent races will be displayed as soon as possible.

**19.3** The race committee may alter the class start sequence from that shown or amalgamate or split classes into more divisions in the light of entries received at the start of the event.

### 20. RACING AREA

The race area is Falmouth Bay.

### 21. THE COURSES

**21.1** Courses and the range and bearing of the first windward mark will be announced on VHF Ch 72. Failure to make a broadcast will not be grounds for a request for redress. This changes RRS 62.1(a).

**21.2** The diagrams in Addendum A show the courses, the start and finish lines, details of the marks laid and the order in which marks are to be passed. All marks except 3s, which is to be left to starboard, are to be left to port on all courses.

**21.3** Separate windward marks will be laid: a long-course windward mark (mark 1) and a short-course mark (mark 2). At the discretion of the race committee, the spreader mark 1a and mark 3s may be laid and this will be announced on VHF channel 72. Failure to make a broadcast will not be grounds for a request for redress. This changes RRS 62.1(a).

### 22. MARKS

A table showing descriptions of the marks is at Addendum A.

### 23. CHANGE TO A LEG OF THE COURSE

**23.1** Marks may be moved by not more than 200m and/or 20 degrees without signalling. This changes RRS 33.

**23.2** To change the next leg of the course, the race committee may lay a new mark (or move the finishing line) and remove the original mark as soon as practicable. When in a subsequent change a new mark is replaced, it will be replaced by the original mark.

### 24. SHORTEN COURSE

If a race committee vessel displays flag “G” with a class flag and makes repeated sound signals as the leading boats in a class approach mark 4, it means, for boats in that class, “pass this mark on the required side and between the mark and the committee vessel then sail direct to the designated finish for this race”. If no class flag is displayed, this instruction applies to all boats on the course.

### 25. THE FINISH

The finish line will be between the mast or staff on the committee vessel displaying a blue flag, and a blue spherical buoy in the approximate positions as shown at Addendum A.

### 26. AREAS THAT ARE OBSTRUCTIONS

Boats are to treat the areas between the windward marks and their associated spreader marks on courses they are not sailing as obstructions.

### 27. TARGET TIME AND TIME LIMIT

**27.1** The Target Time for each race is 75 minutes, the Race Time Limit is 100 minutes and the Finishing Window is 35 minutes.

**27.2** The Finishing Window is the time for boats in a class to finish after the first boat in that class sails the course and finishes. Boats failing to finish within the Finishing Window, and not subsequently retiring, penalized or given redress, will be scored Time Limit Expired (TLE) without a hearing. A boat scored TLE shall be scored points for the finishing place one more than the points scored by the last boat that finished within the Finishing Window. This changes RRS 35, A5.1, A5.2 and A10.

**27.3** Failure to meet the Target Time will not be grounds for redress. This changes RRS 62.1(a).

**27.4** The time for the first boat in a class to finish may be broadcast on VHF Ch 72. Failure to make a broadcast will not be grounds for a request for redress. This changes RRS 62.1(a).

## **SECTION 3 - REGATTA COURSES FOR THE FIREBIRD CLASS (ALL DAYS EXCEPT WEDNESDAY)**

### **28. INTRODUCTION**

**28.1** The sailing instructions in this section will apply to the regatta courses sailed by the Firebird class only on all days except Wednesday.

**28.2** The Firebird class will not sail on the windward-leeward course.

### **29. SCHEDULE OF RACES**

**29.1** The warning signal for the race on Sunday, Monday and Tuesday and for the first race of the day on Thursday, Friday and Saturday, will not be before 1055.

**29.2** On Thursday, Friday and Saturday, the warning signal for the second and subsequent races of the day for the Firebird class will be displayed as soon as possible.

### **30. RACING AREA**

The race area is Falmouth Bay.

### **31. THE COURSES**

**31.1** The course to be sailed will be broadcast on VHF Ch 72. A chartlet showing the approximate positions of the marks for the Bay regatta courses is at Addendum B.

**31.2** Courses and the range and bearing of the first windward mark will be announced on VHF and by no other means. Failure to make a broadcast will not be grounds for a request for redress. This changes RRS 62.1(a).

### **32. CHANGE TO A LEG OF THE COURSE**

If a race committee vessel displays flag "G" and makes repeated sound signals, at or near a race mark, it means, "pass this mark on the required side and between the mark and the committee vessel then sail direct to the designated finish for this race".

### **33. THE FINISH**

The finishing line will be between the mast on the signal vessel displaying a blue flag, and a yellow conical inflated buoy; these will be in approximately the same positions as the starting line.

### **34. TARGET TIME AND TIME LIMITS**

**34.1** The Target Time for each race is 75 minutes, the Race Time Limit is 100 minutes and the Finishing Window is 35 minutes.

**34.2** The Finishing Window is the time for boats to finish after the first boat sails the course and finishes. Boats failing to finish within the Finishing Window, and not subsequently retiring, penalized or given redress, will be scored Time Limit Expired (TLE) without a hearing. A boat scored TLE shall be scored points for the finishing place one more than the points scored by the last boat that finished within the Finishing Window. This changes RRS 35, A5.1, A5.2 and A10.

**34.3** Failure to meet the Target Time will not be grounds for redress. This changes RRS 62.1(a).

**34.4** The time for the first boat to finish may be broadcast on VHF Ch 72. Failure to make a broadcast will not be grounds for a request for redress. This changes RRS 62.1(a).

### **35. AREAS THAT ARE OBSTRUCTIONS**

**35.1** Once boats have completed the first leg of the course they are to treat the area bounded by windward-leeward marks (see the course diagrams at pages A-1 and A-2 for their approximate relative positions) as an obstruction.

**35.2** All boats are to sail to seaward of August Rock starboard lateral mark (approximate position: 50° 06.12' N, 005° 05.01' W).



## **SECTION 4 - CHAMPAGNE AND LONG-DISTANCE RACES - ALL CLASSES INCLUDING FIREBIRD**

### **36. SCHEDULE OF RACES**

**36.1** Classes will start in the following order: Firebirds, IRC 1, E, IRC 2, U.

**36.2** The warning signal for the first class to start will not be before 1025. There will be a five minute gap between the starting signal for the Firebird class and the warning signal for the IRC 1 start.

**36.3** The race committee may alter the class start sequence from that shown or amalgamate or split classes into more divisions in the light of entries received at the start of the event.

### **37. RACING AREA**

The race area is Falmouth Bay and Gerrans Bay, as shown in Addendum B.

### **38. THE COURSES**

**38.1** The descriptions and approximate positions of the marks of the courses are listed in Addendum B.

**38.2** Courses will be selected from the list at Addendum C.

### **39. CHANGE TO THE NEXT LEG OF THE COURSE**

If a race committee vessel displays flag "G" with a class flag and makes repeated sound signals, at or near a race mark, it means, "pass this mark on the required side and between the mark and the committee vessel then sail direct to the designated finish for this race". If no class flag is displayed this instruction will apply to all boats on the course.

### **40. THE FINISH**

The finish will be on the west side of Pendennis Point, between the mast on a committee vessel displaying a blue flag and a blue spherical inflated buoy.

### **41. TARGET TIME AND TIME LIMIT**

**41.1** For the Firebird class, the Target Time for the race is 2 hours, the Race Time Limit is 2 hours 30 minutes and the Finishing Window is 1 hour.

**41.2** For all other classes, the Target Time for the race is 4 hours, the Race Time Limit is 5 hours and the Finishing Window is 60 minutes.

**41.3** The Finishing Window is the time for boats to finish after the first boat sails the course and finishes. Boats failing to finish within the Finishing Window, and not subsequently retiring, penalized or given redress, will be scored Time Limit Expired (TLE) without a hearing. A boat scored TLE shall be scored points for the finishing place one more than the points scored by the last boat that finished within the Finishing Window. This changes RRS 35, A5.1, A5.2 and A10.

**41.4** Failure to meet the Target Time will not be grounds for redress. This changes RRS 62.1(a).

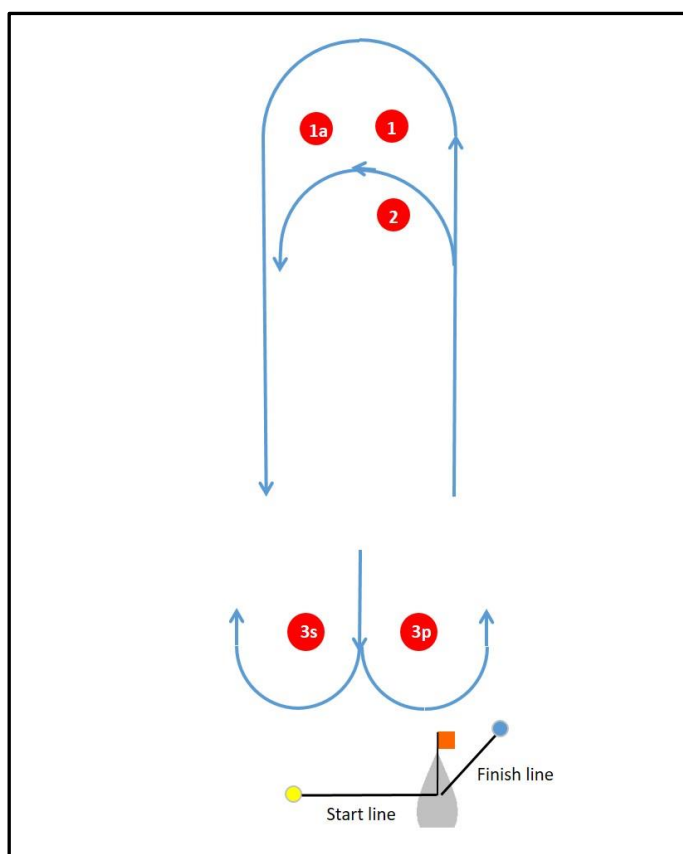
**41.5** The time for the first boat in a class to finish may be broadcast on VHF Ch 72. Failure to make a broadcast will not be grounds for a request for redress. This changes RRS 62.1(a).

## ADDENDUM A: WINDWARD-LEEWARD COURSE DIAGRAM AND COURSES

For all courses:

- The diagrams below are not to scale and are indicative diagrams only.
- Where applicable, the internal angle will be approximately 60°.
- Marks may be moved by not more than 200m and/or 15 degrees without signalling.
- The spreader mark (mark 1a) and mark 3s may be laid and this will be announced on VHF channel 72. When laid, mark 1a is to be left to port and mark 3s is to be left to starboard. All other marks are to be left to port.
- Boats are to treat the areas between the windward marks and their associated spreader marks, on courses they are not sailing, as obstructions.
- If a race committee vessel displays flag “G” and makes repeated sound signals as the leading boats in a class approach mark 3p or 3s (if laid), it means, for boats in that class, “pass this mark on the required side and between the mark and the committee vessel then sail direct to the designated finish for this race”.

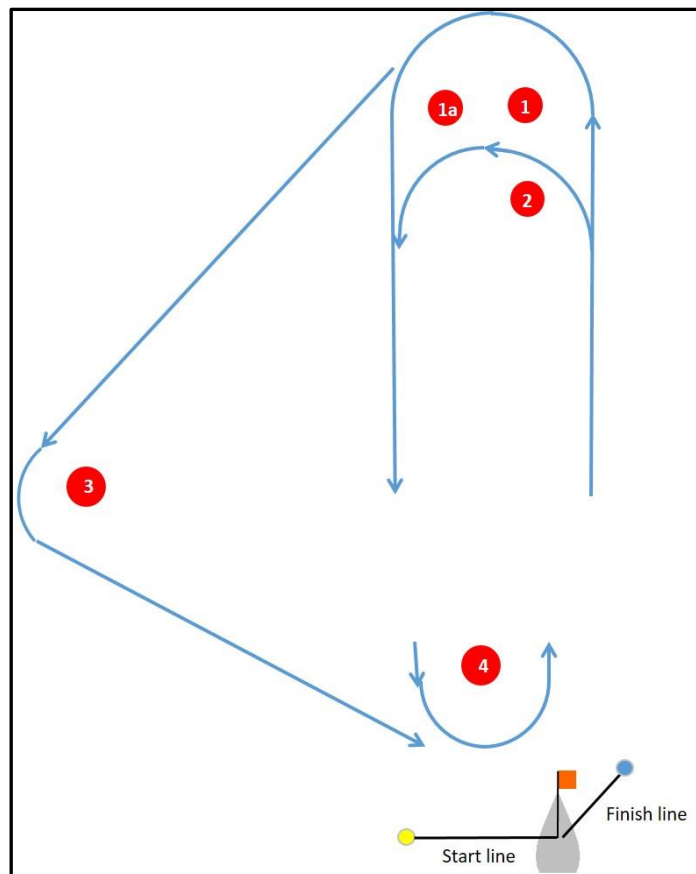
### WINDWARD-LEEWARD COURSE DIAGRAM



### WINDWARD-LEEWARD COURSES

COURSES	
Signal	Mark Rounding Order ( <u>All marks except 3s to be left to port</u> )
W1	Start – 1 – 1a – 3p/3s – 1 – 1a – 3p – Finish
W2	Start – 1 – 1a – 3p/3s – 1 – 1a – 3p/3s – 1 – 1a – 3p – Finish
W3	Start – 2 – 3p/3s – 2 – 3p – Finish
W4	Start – 2 – 3p/3s – 2 – 3p/3s – 2 – 3p – Finish

## SAUSAGE-TRIANGLE COURSE DIAGRAM



## SAUSAGE-TRIANGLE COURSES

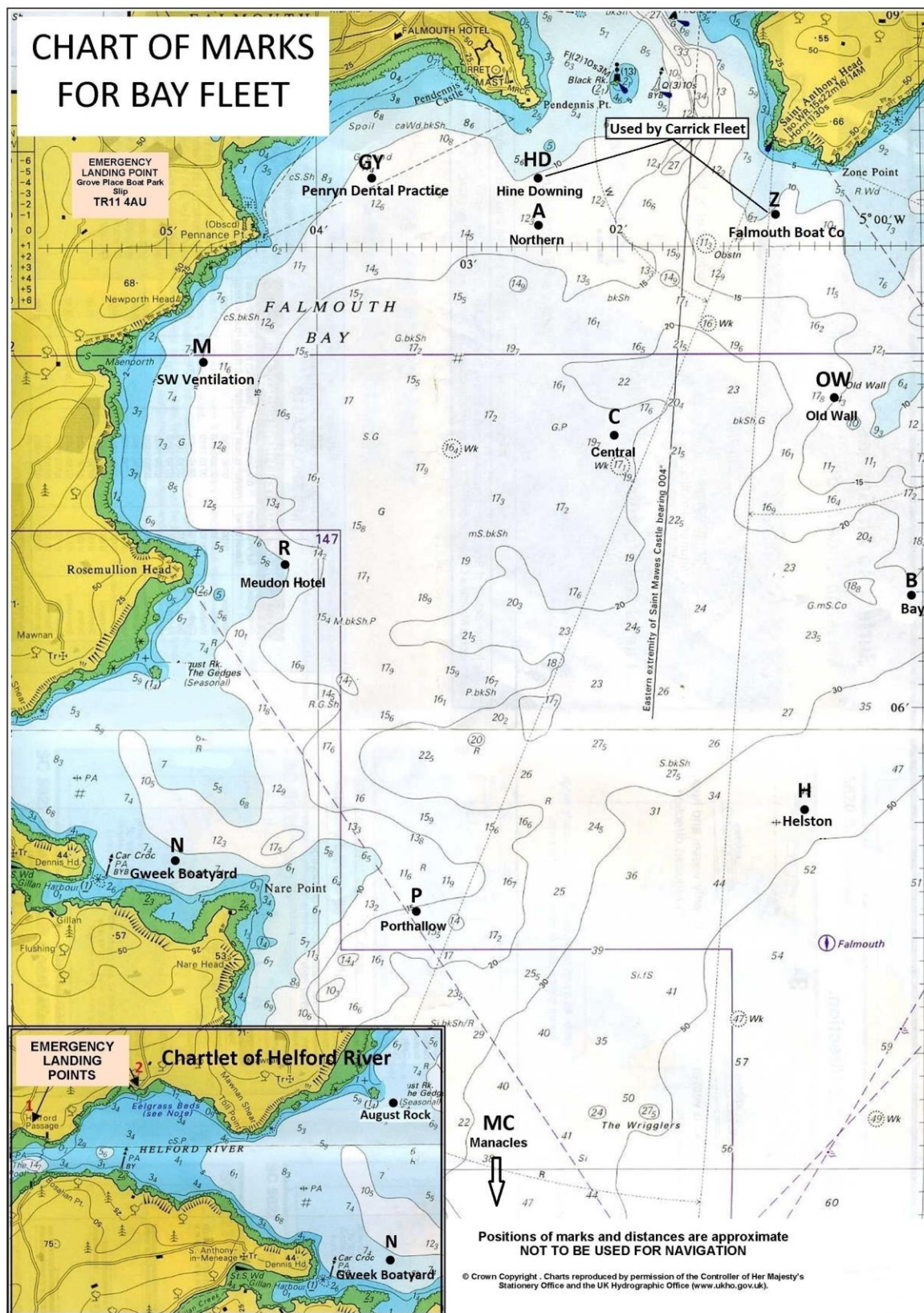
COURSES	
Signal	Mark Rounding Order (All marks except 3s to be left to port)
T1	Start - 1 - 1a - 4 - 1 - 1a - 3 - 4 - Finish
T2	Start - 1 - 1a - 3 - 4 - 1 - 1a - 4 - 1 - 1a - 4 - Finish
T3	Start - 2 - 4 - 2 - 3 - 4 - Finish
T4	Start - 2 - 3 - 4 - 2 - 4 - 2 - 4 - Finish

## MARK DESCRIPTIONS

Mark	Description
Start line ODM	Yellow conical
Start line ILM (if used)	Orange cylinder, 800mm height, marked "Y"
1	Orange cylinder, 2m height
1a (if used)	Orange cylinder, 800mm height, marked "O"
2	Red cylinder, 2m height
3p and 4	Red cylinder, 2m height
3s (if used)	Red cylinder, 2m height
Finish line ODM	Blue spherical

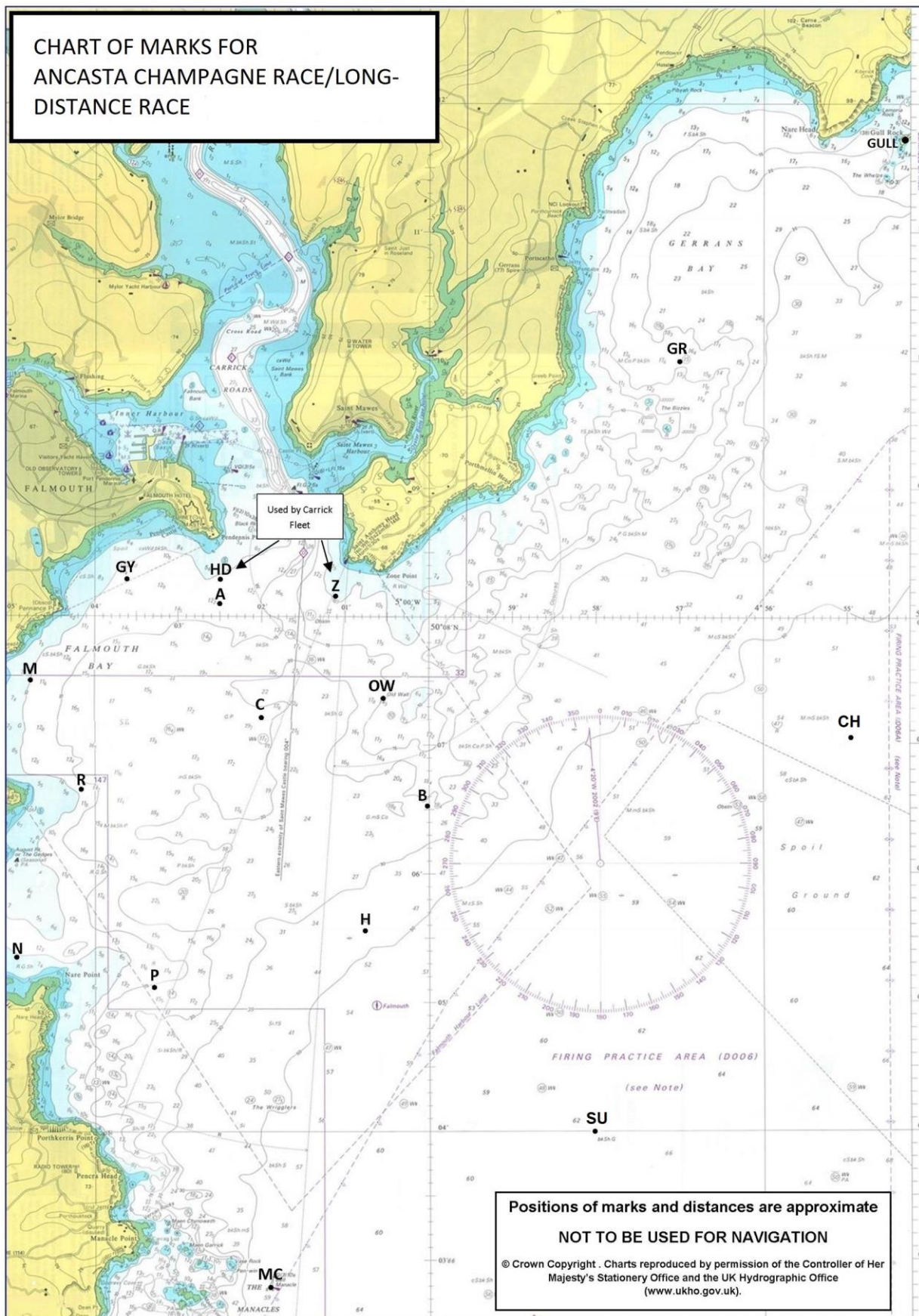
# ADDENDUM B: REGATTA AND ANCASTA CHAMPAGNE RACE AND LONG-DISTANCE RACE - CHARTLETS AND MARK DESCRIPTIONS

## CHARTLET FOR BAY REGATTA COURSES





## CHARTLET FOR THE ANCASTA CHAMPAGNE AND LONG-DISTANCE RACES



## MARK DESCRIPTIONS

CODE	SPONSOR OR NAME	DESCRIPTION	LAT	LONG
A	Northern	Red, Orange or Yellow Inflatable	50° 08.10' N	005° 02.50' W
B	Bay	Red, Orange or Yellow Inflatable	50° 06.50' N	005° 00.00' W
C	Central	Red, Orange or Yellow Inflatable	50° 07.20' N	005° 02.00' W
GY	Penryn Dental Practice	Yellow Spherical with code	50° 08.30' N	005° 03.60' W
H	Helston	Yellow Spherical with code	50° 05.55' N	005° 00.75' W
HD	Hine Downing	Yellow Spherical with code	50° 08.39' N	005° 02.76' W
M	SW Ventilation	Yellow Spherical with code	50° 07.50' N	005° 04.80' W
MC	Manacles	East Cardinal Buoy	50° 02.81' N	005° 01.91' W
N	Gweek Boatyard	Yellow Spherical with code	50° 05.36' N	005° 04.91' W
OW	Old Wall	Yellow Spherical with code	50° 07.35' N	005° 00.55' W
P	Porthallow	Yellow Spherical with code	50° 05.10' N	005° 03.30' W
R	Meudon Hotel	Yellow Spherical with code	50° 06.61' N	005° 04.20' W
WX	Windward	Red Cylindrical	Laid mark to windward of the start line	
Z	Falmouth Boat Co	Yellow Spherical with code	50° 08.15' N	005° 01.10' W
<b>ADDITIONAL MARKS FOR THE ANCASTA CHAMPAGNE RACE/LONG DISTANCE RACE</b>				
CH	Channel	GPS virtual mark	50° 07.70' N	004° 55.30' W
GR	Greeb	Red cylindrical	50° 10.00' N	004° 57.00' W
GU	Gull Rock	Prominent islet	50° 11.72' N	004° 54.32' W
SU	Submarine	GPS virtual mark	50° 04.00' N	004° 58.00' W



## ADDENDUM C: COURSES FOR THE ANCASTA CHAMPAGNE RACE AND THE LONG DISTANCE RACE ON WEDNESDAY

The table shows the group of courses to be used for a given wind direction, and the courses in that group. **All marks are to be passed to port unless otherwise shown; for example, R(s) means pass Rosemullion (Meudon Hotel) to starboard; P means pass Porthallow to port.**

FOR ALL GROUPS, COURSE 9 IS AT THE RACE OFFICER'S DISCRETION; to be COMMUNICATED BY VHF ONLY.

										Approx distance (nm)
<b>GROUP 1</b>		<b>NORTH</b>			<b>Start area: near Central (C)</b>					
1	A	GY	MC	A	P	H	OW	A	Finish	23
2	A	GY	MC	C	P	H	A		Finish	20
3	A	GY	P	H	A	GY	P	C A	Finish	18
4	A	GY	MC	B	OW	B	OW	A	Finish	17
5	A	GY	P	C	A	GY	H	A	Finish	16
6	A	GY	MC	H	A				Finish	14
7	A	GY	N	P	H	B	OW	A	Finish	12
<b>GROUP 2</b>		<b>NORTHWEST</b>			<b>Start area: near Central (C)</b>					
1	GY	MC	GR	P(s)	N(s)	A			Finish	27
2	GY	H	GR	P(s)	N(s)	A			Finish	22
3	GY	H	GR	C(s)	A				Finish	17
4	GY	MC	H	P(s)	A				Finish	15
5	GY	MC	A						Finish	13
6	GY	P	R(s)	H	A				Finish	12
<b>GROUP 3</b>		<b>WEST</b>			<b>Start area: near Old Wall (OW)</b>					
1	M	MC	GULL	C(s)	A				Finish	27
2	M	MC	GR	C(s)	A				Finish	22
3	M	MC	H	P(s)	B	C(s)	A		Finish	17
4	M	H(s)	P(s)	B	C(s)	A			Finish	14
5	M	MC	H	C(s)	A				Finish	15
6	M	R(s)	N	H	C(s)	A			Finish	12
<b>GROUP 4</b>		<b>SOUTH WEST</b>			<b>Start area: near Central (C)</b>					
1	P	GULL(s)	H(s)	A					Finish	23
2	P	GULL(s)	OW(s)	A					Finish	20
3	P	H	GR	C(s)	R(s)	A			Finish	18
4	P	H	GR	C(s)	A				Finish	16
5	P	MC	H	C(s)	A				Finish	13
6	P	MC	H	R(s)	A				Finish	13
7	P	MC	OW	C(s)	A				Finish	12
<b>GROUP 5</b>		<b>SOUTH</b>			<b>Start area: near Penryn Dental Practice (GY)</b>					
1	MC	GULL	A						Finish	23
2	MC	GR	B(s)	A					Finish	20
3	MC	GR	A						Finish	18
4	P	GR	OW(s)	A					Finish	15
5	P	GY	P	A					Finish	14
6	P	C	P	C	A				Finish	12
7	P	H	C	H	A				Finish	12
<b>GROUP 6</b>		<b>SOUTH EAST</b>			<b>Start area: near Penryn Dental Practice (GY)</b>					
1	H(s)	R	MC	B	M	C	A		Finish	22
2	H(s)	R	MC	B	P	C	A		Finish	21
3	H(s)	R	P	OW	N	C	A		Finish	18
4	H(s)	R	MC	C	A				Finish	16
5	H(s)	R	P	C	A				Finish	12

continued on next page

GROUP 7		EAST				Start area: near Meudon Hotel (R)			
1	OW	GULL(s)	MC(s)	A					25
2	OW	GULL(s)	H(s)	A					20
3	OW	GR(s)	MC(s)	A					20
4	OW	GY	N	B	M	R	A		18
5	OW	GR(s)	H(s)	A					15
6	OW	GY	R	OW	M	R	A		15
7	OW	GY	R	B	A				13
GROUP 8		NORTH EAST				Start area: near Meudon Hotel (R)			
1	GULL	MC	C	A			Finish		23
2	GR	MC	C	A			Finish		21
3	GULL	P	C	A			Finish		20
4	GR	P	C	A			Finish		17
5	GR	OW	A				Finish		15
6	GR	C	A				Finish		14

\*\*\*\*\*  
**NOT PART OF THE SAILING INSTRUCTIONS**  
\*\*\*\*\*

## **QR CODE TO JOIN THE BAY FLEET WHATSAPP GROUP**

1. Open WhatsApp, tap Camera
2. Hold device over the QR code to scan (adjust distance so QR code fits the screen)
3. Tap ADD

