

# FALMOUTH SAILING WEEK 2022

Saturday 6<sup>th</sup> to Saturday 13<sup>th</sup> August

Organising Authority: Port of Falmouth Sailing Association (PoFSA)  
(Website: [www.falmouthweek.co.uk/sailing-week](http://www.falmouthweek.co.uk/sailing-week))

## SAILING INSTRUCTIONS FOR B CLASS WHEN RACING WITH THE BAY FLEET on SUNDAY 7<sup>th</sup> AUGUST

### PREAMBLE

These are the additional sailing instructions for B class, to be used if these boats race at the Helford on Sunday with the Bay Regatta fleet under Carrick SI 6.3. The following Carrick instructions are changed or inserted, as shown below.

#### Abbreviations:

[NP] - A breach of this rule will not be grounds for protest by a boat.

[DP] - Rules for which the penalties are at the discretion of the protest committee.

### 3. COMMUNICATIONS WITH COMPETITORS

**3.1** Notices to competitors will be posted on the official notice board located on the Falmouth Week website at [www.falmouthweek.co.uk/race-management](http://www.falmouthweek.co.uk/race-management).

**3.2** [NP] On the water, the race committee intends to monitor and communicate with competitors on VHF Ch. 72.

**3.3** All starting, postponement, abandonment, shortening and recall signals, the course to be sailed and the count down, will, where possible, be broadcast by the race committee on VHF Ch 72. Failure to make a broadcast or to time it accurately, and failure to receive such broadcasts, shall not be grounds for a request for redress. This changes RRS 62.1(a).

**3.4** Changes to finishing window times and the time of the first boat in a class to finish may be broadcast by the race committee on VHF Ch 72. Failure to receive such broadcasts will not be grounds for redress. This changes RRS 62.1(a).

**3.5** [DP] While racing, except in an emergency, a boat shall not make voice or data transmissions and shall not receive voice or data communications that are not available to all boats.

**3.6** The race committee may use email and WhatsApp to alert competitors to notices being posted. The QR code to join the Bay Fleet WhatsApp group is attached to these sailing instructions.

### 6. SCHEDULE OF RACES

**5.7** Carrick Green Group warning signals

Regatta Class	Class Flag	Warning Signal
Working Boat	B	Not before 1330 (with, or as soon as possible after, the starting signal of Bay YTC class U)

### 8. RACING AREA

The race area is Falmouth Bay, including the mouth of the Helford River approximately as far as Mawnan Shear (50° 05.99' N, 005° 06.00' W).

## **12. THE START**

- 12.1** The race committee signal vessel is the white hulled sloop "Alice Rose". The signal vessel will describe its approximate position on VHF Ch.72 approximately 30 minutes before the first scheduled warning signal.
- 12.2** The starting line will be between the mast on the signal vessel, displaying an orange flag, and a yellow conical inflated buoy.
- 12.3** For the first class to start, an attention signal (orange flag with one sound signal) will be made five minutes before the warning signal. The race committee will designate the course to be sailed before or with the attention signal.
- 12.4** A starting inner limit mark (ILM) may be placed off the race committee signal vessel. The ILM will not necessarily lie on the start line.
- 12.5** [NP][DP] No boat after its preparatory signal shall enter the triangle formed by the bow of the race committee signals vessel on station, the ILM and the stern of the same vessel. The race committee will protest boats breaching this sailing instruction.
- 12.6** If any part of a boat's hull is on the course side of the starting line during the two minutes before her starting signal and she is identified, the race committee will attempt to broadcast her sail number on VHF. Failure to make a broadcast or to time it accurately will not be grounds for a request for redress. This changes rule 62.1(a).
- 12.7** [DP] Boats whose warning signal has not been made shall avoid the starting area during the starting sequence of other races.
- 12.8** A boat starting later than four minutes after her starting signal will be scored Did Not Start without a hearing. This changes RRS A5.1 and A5.2.
- 12.9** In the event of a general recall, the warning signal for the next class to start will be removed and then re-displayed with the next starting signal of the recalled class. This changes rule 27.3.

## **9. THE COURSES**

- 9.2** Courses will be selected from the list at Addendum A.

## **10. MARKS**

A chart showing the approximate positions of the marks, and the mark letters, mark descriptions and approximate coordinates, are at Addendum B.

## **11. OBSTRUCTIONS**

- 11.5** All boats are to sail to seaward of August Rock starboard lateral mark (approximate position: 50° 06.12' N, 005° 05.01' W).

## **13. CHANGE TO A LEG OF THE COURSE**

If a race committee vessel displays flag "G" with a class flag and makes repeated sound signals, at or near a race mark, it means, "pass this mark on the required side and between the mark and the committee vessel then sail direct to the designated finish for this race". If no class flag is displayed this instruction will apply to all boats on the course.

## **12. THE FINISH**

The finish line will be in the mouth of the Helford River, between the mast on a committee boat displaying an orange flag and a yellow conical buoy.

## **19. SAFETY REGULATIONS [NP][DP]**

- 19.1** SIs 13.2 to 13.4 are in addition to the requirements of NoR regulation 4.4.
- 19.2** Competitors who leave the cockpit of a boat not fitted with guardrails shall wear an appropriate personal flotation device.
- 19.3** Any boat that retires shall inform the signals vessel, or another official vessel, as soon as possible on VHF Ch.72. If unable to do so, they shall inform the race office by telephone (07775 574308) at the first opportunity.
- 19.4** Competitors shall obey the instructions of an official vessel to move out of the way of shipping constricted in its ability to manoeuvre or constrained by its draft.
- 19.5** Competitors requiring assistance from a patrol vessel should call "Bay Safety Control" on VHF Ch. 72.

## **25. TRASH DISPOSAL**

This sailing instruction is deleted.

## ADDENDUM A: COURSES FOR THE SECOND RACE ON SUNDAY

The table shows the group of courses to be used for a given wind direction, and the courses in that group.

**All marks are to be passed to port unless otherwise shown; for example, R(s) means pass Rosemullion (Meudon Hotel) to starboard; P means pass Porthallow to port.**

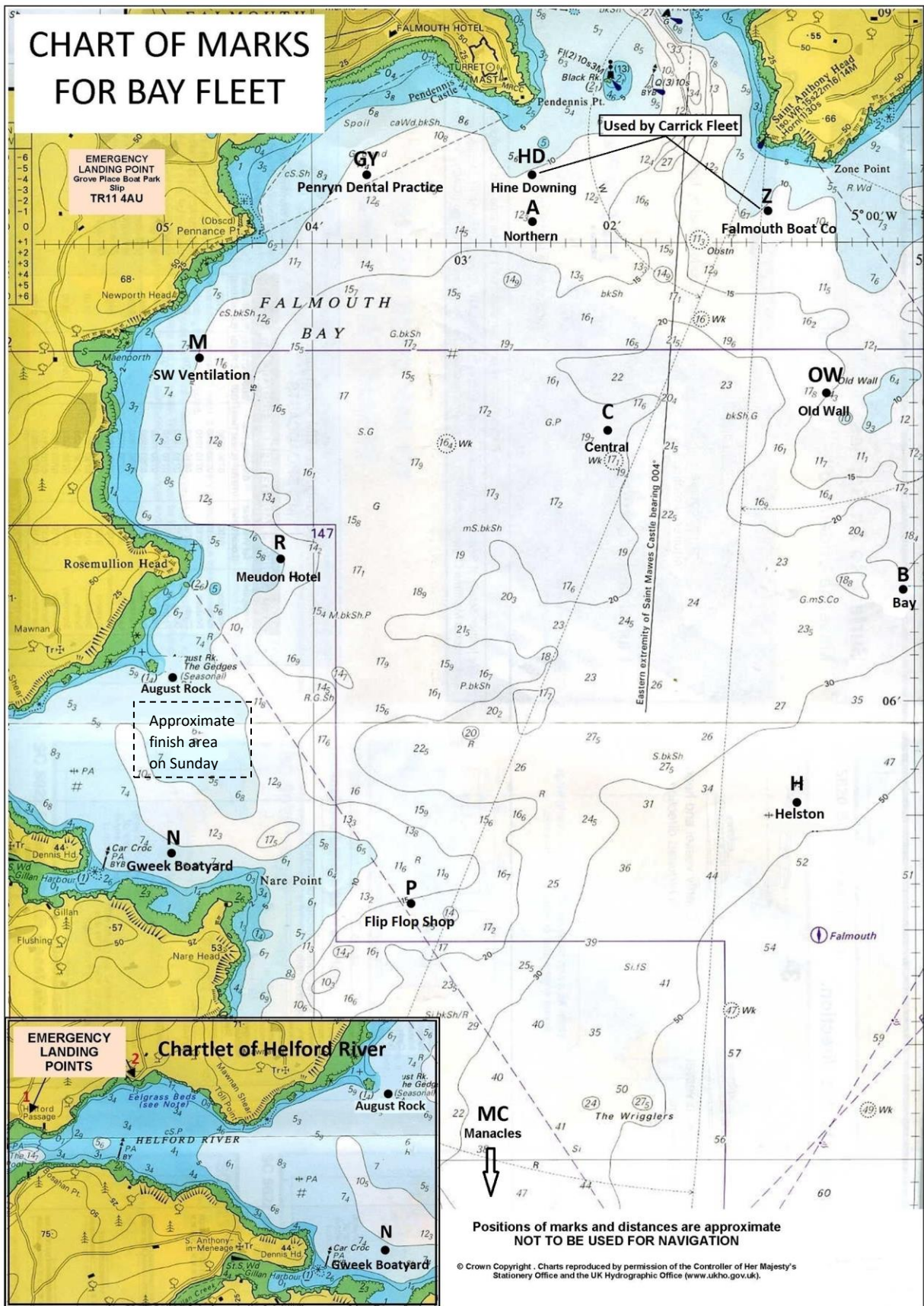
FOR ALL GROUPS, COURSE 9 IS AT THE RACE OFFICER'S DISCRETION; to be COMMUNICATED BY VHF ONLY.

							Approx distance (nm)
<b>GROUP 1</b>		<b>NORTH</b>			<b>Start area: near Meudon Hotel (R)</b>		
1	GY	M	C(s)	P(s)		Finish	9
2	GY	M	C(s)			Finish	8
3	GY	M	R	M		Finish	7
4	GY	M	C(s)			Finish	7
5	GY	M	P(s)	N(s)		Finish	7
6	GY	M	P(s)			Finish	6
<b>GROUP 2</b>		<b>NORTH WEST</b>			<b>Start area: near Central (C)</b>		
1	GY	M	C(s)	P(s)	R	Finish	9
2	GY	C(s)	M	P(s)		Finish	8
3	GY	P(s)	R			Finish	7
4	GY	C(s)	M			Finish	7
5	GY	M	P(s)			Finish	6
6	GY	M				Finish	5
<b>GROUP 3</b>		<b>WEST</b>			<b>Start area: near Central (C)</b>		
1	M(s)	GY(s)	P(s)	R		Finish	9
2	M(s)	GY(s)	A(s)	R	P(s)	Finish	8
3	M(s)	A(s)	P(s)	N(s)		Finish	8
4	M(s)	GY(s)	P(s)			Finish	7
5	M(s)	C(s)				Finish	6
<b>GROUP 4</b>		<b>SOUTH WEST</b>			<b>Start area: near Northern (A)</b>		
1	R(s)	GY(s)	C(s)	P(s)		Finish	9
2	R(s)	M(s)	C(s)	P(s)		Finish	8
3	R(s)	A(s)				Finish	7
4	R(s)	M(s)	P(s)			Finish	7
5	P(s)	N(s)				Finish	5
<b>GROUP 5</b>		<b>SOUTH</b>			<b>Start area: near Penryn Dental Practice (GY)</b>		
1	MC(s)	N(s)				Finish	9
2	P(s)	M	N(s)			Finish	8
3	P(s)	R	N(s)			Finish	7
4	P(s)	N(s)				Finish	5
<b>GROUP 6</b>		<b>SOUTH EAST</b>			<b>Start area: near Penryn Dental Practice (GY)</b>		
1	C(s)	MC(s)	N(s)			Finish	10
2	C(s)	M	P(s)	N(s)		Finish	8
3	C(s)	R	P(s)	N(s)		Finish	6
4	C(s)	P(s)	N(s)			Finish	5
<b>GROUP 7</b>		<b>EAST</b>			<b>Start area: near SW Ventilation (M)</b>		
1	OW(s)	B(s)	H(s)	P(s)	N(s)	Finish	9
2	C(s)	B(s)	H(s)	P(s)	N(s)	Finish	8
3	OW(s)	R	P(s)	N(s)		Finish	8
4	C(s)	R	P(s)	N(s)		Finish	7
5	C(s)	H(s)	P(s)	N(s)		Finish	7
6	C(s)	N(s)				Finish	5
<b>GROUP 8</b>		<b>NORTH EAST</b>			<b>Start area: near Meudon Hotel (R)</b>		
1	A(s)	MC(s)	N(s)			Finish	11
2	A(s)	R(s)	M(s)	P(s)	N(s)	Finish	9
3	A(s)	P(s)	N(s)			Finish	7
4	A(s)	OW(s)	P(s)	N(s)		Finish	7
5	A(s)	N(s)				Finish	6

## ADDENDUM B REGATTA RACE MARK DESCRIPTIONS AND CHARTLETS

CODE	MARK	DESCRIPTION	LAT	LONG
A	Northern	Red, Orange or Yellow Inflatable	50° 08.10' N	005° 02.50' W
B	Bay	Red, Orange or Yellow Inflatable	50° 06.50' N	005° 00.00' W
C	Central	Red, Orange or Yellow Inflatable	50° 07.20' N	005° 02.00' W
GY	Penryn Dental Practice	Yellow Spherical	50° 08.30' N	005° 03.60' W
H	Helston	Yellow Spherical	50° 05.55' N	005° 00.75' W
HD	Hine Downing	Yellow Spherical	50° 08.39' N	005° 02.76' W
M	SW Ventilation	Yellow Spherical	50° 07.50' N	005° 04.80' W
MC	Manacles	East Cardinal Buoy	50° 02.81' N	005° 01.91' W
N	Gweek Boatyard	Yellow Spherical	50° 05.36' N	005° 04.91' W
OW	Old Wall	Yellow Spherical	50° 07.35' N	005° 00.55' W
P	Flip Flop Shop	Yellow Spherical	50° 05.10' N	005° 03.30' W
R	Meudon Hotel	Yellow Spherical	50° 06.61' N	005° 04.20' W
WX	Windward	Red Cylindrical	Laid mark to windward of the start line	
Z	Falmouth Boat Co	Yellow Spherical	50° 08.15' N	005° 01.10' W
<b>ADDITIONAL MARKS FOR THE ANCASTA CHAMPAGNE AND LONG DISTANCE RACES</b>				
GR	Greeb	Red, Orange or Yellow Inflatable	50° 10.00' N	004° 57.00' W
GULL	Gull Rock	Prominent islet	50° 11.72' N	004° 54.32' W

# CHART OF MARKS FOR BAY FLEET



\*\*\*\*\*  
**NOT PART OF THE SAILING INSTRUCTIONS**  
\*\*\*\*\*

## **QR CODE TO JOIN THE BAY FLEET WHATSAPP GROUP**

1. Open WhatsApp, tap Camera
2. Hold device over the QR code to scan (adjust distance so QR code fits the screen)
3. Tap ADD

