

FALMOUTH SAILING WEEK 2021

Sunday 8th to Saturday 14th August

Organising Authority: Port of Falmouth Sailing Association (PoFSA)
(Website: www.falmouthweek.co.uk/sailing-week)

SAILING INSTRUCTIONS FOR THE BAY FLEET including the Ancasta Champagne Race/Long-Distance Race

PREAMBLE

These Sailing Instructions (SIs) are divided into four sections:

Section 1 applies to all racing.

Section 2 (beginning with SI 19) applies to Regatta courses on Sunday 8th August, to Tuesday 10th August and, for the Firebird class only, to Regatta courses on Thursday 12th to Saturday 14th August.

Section 3 (beginning with SI 27) applies only to the Champagne Race/Long-Distance Race on Wednesday 11th August.

Section 4 (beginning with SI 33) applies only to Windward/Leeward courses from Thursday 12th to Saturday 14th August.

Abbreviations:

[NP] - A breach of this rule will not be grounds for protest by a boat.

[DP] - Rules for which the penalties are at the discretion of the protest committee.

SECTION 1 - ALL RACING

1. RULES

- 1.1** The regatta will be governed by the rules as defined in *The Racing Rules of Sailing 2021 - 2024*. The following racing rules are changed:

Rule	SI
26	8.5
27.3	8.8
29	8.5
32	8.5
33	37.1
35	25.3, 32, 40
61.1(a)(2)	10.1
62.1(a)	2.2, 3.2, 8.5, 8.7, 35.1, 35.3
A4	25.3, 32, 40
A4.2	8.6
A5	25.3, 32, 40

- 1.2** RRS 40.1 will apply to Firebird catamarans at all times while afloat without Flag Y being displayed.
- 1.3** RRS 37 will not apply.
- 1.4** IRC Rules 2021 Parts A, B and C will apply, except that:
- (a) IRC rule 21.1.5(e) is amended. The use of a spare mainsail will be allowed so long as it is carried onboard at all times while racing.
 - (b) For the purpose of IRC Rules 21.1.5 (d) and (e) this regatta is on consecutive days and the sails carried shall remain the same.

(c) IRC rule 22.4.2 is changed: the number of crew shall not exceed the number printed on the certificate plus two.

1.5 The World Sailing Offshore Special Regulations 2020 - 2021 Appendix B - Inshore Racing will apply.

2. NOTICES TO COMPETITORS

2.1 Notices to competitors will be posted on the official notice board located on the Falmouth Week website at www.falmouthweek.co.uk/race-management.

2.2 Race communications may be broadcast on VHF Ch. **72**. Failure to receive such broadcasts will not be grounds for redress. This changes rule 62.1(a).

2.3 The race committee may use email and WhatsApp to alert competitors to notices being posted. The QR code to join the Bay Fleet WhatsApp group is attached to these sailing instructions.

3. CHANGES TO THE SAILING INSTRUCTIONS

3.1 Any change to the sailing instructions will be posted before 0900 hrs on the day it will take effect, except that any change to the schedule of races will be posted by 2030 hrs on the day before it will take effect.

3.2 Oral changes on the water to these sailing instructions shall be broadcast on VHF Ch. **72**. Failure to receive such broadcasts will not be grounds for redress. This changes rule 62.1(a).

4. SIGNALS MADE ASHORE

4.1 Signals made ashore will be displayed at the Royal Cornwall Yacht Club flagstaff and may be repeated at Mylor Yacht Club, Restronguet Sailing Club and St Mawes Sailing Club.

4.2 When flag "AP" is displayed ashore, "1 minute" is replaced with "not less than 75 minutes" in the race signal AP.

4.3 When pennant "4", is displayed over a race signal that instruction shall apply to the windward-leeward and regatta fleet in the Bay only.

4.4 When pennant "5", is displayed over a race signal that instruction shall apply to the Champagne fleet only.

5. SCHEDULE OF RACES

5.1 Because of the ongoing Covid situation the race briefing will take the form of a video presentation published on the official notice board at <https://falmouthweek.co.uk/race-management/>. Competitors will be alerted by WhatsApp.

5.2 Racing is scheduled on seven days from Sunday 8th to Saturday 15th August.

(a) On Sunday, Monday and Tuesday, all classes are scheduled to sail two races per day. The first race on each day will be on a windward-leeward course for all classes except the Firebird class, who will sail on a regatta course. For all classes the second race will be on a regatta course. Races not completed on these days will not be re-sailed.

(b) On Wednesday, all classes will sail one race on a long regatta course. Races not completed on Wednesday will not be re-sailed.

(c) On Thursday, Friday and Saturday, racing in the Regatta Series is scheduled as follows:

Class	No of races per day	Course
Firebird	Up to 3 ⁽¹⁾	Regatta
All other classes	Up to 4 ⁽¹⁾	Windward - leeward

Note 1. Three races will normally be sailed, except for the Firebird class, who will normally sail two races. A fourth race may be sailed at the discretion of the race committee to preserve the overall schedule in the light of past or forecast weather conditions. The race committee will notify its intention to sail an additional race by VHF before the start of the first race of the day.

(d) The warning signal for the first race for the Bay fleet will not be before 1055, except on Wednesday when it will not be before 1025. The warning signals for subsequent races will be as shown in the relevant sections of these SIs.

(e) No warning signal shall be made after 1500 on Saturday.

6. CLASS FLAGS

6.1 Boats racing are required to display class flags, except for the IF Boat and Firebird classes.

6.2 Class flags for the regatta are:

Class	Class Flag	Class	Class Flag	Class	Class Flag
IRC Div 1	1	YTC Div E	E	Firebirds	F
IRC Div 2	2	YTC Div Q	Q	IF Boat	K
IRC Div 3	3	YTC Div U	U		

7. AREAS THAT ARE OBSTRUCTIONS

7.1 Commercial and military shipping. Commercial and military shipping under way and constricted in their ability to manoeuvre are designated as moving exclusion zones. The exclusion zone extends to 100m on all sides of the vessel and includes tugs, race committee escort vessels and pilot vessels. No boat shall enter the exclusion zone and if becalmed may use any means of propulsion to move out of the way. This should only be sufficient to leave the exclusion zone by the safest possible route and offer the competitor no significant advantage in the race.

7.2 Divers. Exclusion zones extend 25m around a dive vessel displaying code flag A, an inflatable orange buoy marking a diver just under the surface, and a diver on the surface. A boat shall not enter the 25m zone.

8. THE START

8.1 The race committee signals vessel is the white hulled sloop “Maja”. The signals vessel will describe its approximate position on VHF Ch.72 approximately 30 minutes before the first scheduled warning signal.

8.2 The starting line will be between the mast on the signals vessel, displaying an orange flag, and a dan buoy with an orange flag.

8.3 Boats whose warning signal has not been made shall avoid the starting area during the starting sequence of other races. [NP][DP]

8.4 For the first class to start, an attention signal (orange flag with one sound signal) will be made five minutes before the warning signal. The race committee will designate the course to be sailed before or with the attention signal.

8.5 All starting, postponement, abandonment, shortening and recall signals, the course to be sailed and the count down, will be broadcast by VHF. Visual signals will not be used. This changes rules 26, 29 and 32. Failure to receive a broadcast shall not be grounds for a request for redress. This changes rule 62.1(a).

8.6 A boat starting later than four minutes after her starting signal will be scored “Did Not Start”. This changes rule A4.2.

8.7 If any part of a boat’s hull, crew or equipment is on the course side of the starting line during the two minutes before her starting signal and she is identified, the race committee will attempt to broadcast her sail number on VHF. Failure to make a broadcast or to time it accurately will not be grounds for a request for redress. This changes rule 62.1(a).

8.8 In the event of a general recall, the warning signal for the next class to start will be removed and then re-signalled with the next starting signal of the recalled class. This changes rule 27.3.

9. PENALTY SYSTEM

As permitted by rule 44.1, the two-turns penalty is replaced by the one-turn penalty.

10. PROTESTS AND REQUESTS FOR REDRESS

10.1 Boats shall comply with rule 61.1(a) irrespective of their length. This changes rule 61.1(a)(2) which is deleted.

10.2 Protest forms are available at the host club of the day or may be downloaded from www.rya.org/racing/racing-rules/Pages/rya-protest-form.aspx. Protests shall be submitted and protest hearings will be held as shown in the table below, unless arrangements are not in accordance with coronavirus restrictions and advice in place at the time. If necessary, the table will be amended.

Protests for races on:	Protest time limit	Protest form to be handed to:	Protests will be heard at:	Schedule of protests will be posted at:
Sunday	1800 Sunday	Sailing Secretary, HRSC	MYC on Monday	MYC by 1820 Monday
Monday	1800 Monday	Sailing Secretary, MYC	MYC on Monday	MYC by 1820 Monday

Tuesday	1800 Tuesday	Sailing Secretary, RSC	RSC on Tuesday	RSC by 1820 Tuesday
Wednesday	1800 Thursday	Sailing Secretary, RCYC	RCYC on Thursday	RCYC by 1820 Thursday
Thursday	1800 Thursday	Sailing Secretary, RCYC	RCYC on Thursday	RCYC by 1820 Thursday
Friday	1800 Friday	StMSC office	StMSC on Friday	StMSC by 1820 Friday
Saturday	1800 Saturday	Sailing Secretary, FSC	RCYC on Saturday	FSC by 1820 Saturday

10.3 The protest time limit applies also to protests by the race committee about incidents they observe in the racing area.

10.4 Adding to RRS 66, if the race signal “N over A” is displayed ashore on the last scheduled day of racing a request for reopening a hearing shall be delivered not later than 30 minutes after the signal is displayed.

11. SCORING

11.1 Firebird Series (Sunday, Monday, Tuesday, Thursday, Friday and Saturday).

Classes	Number of races scheduled	Number of races required to constitute a series	No discards	One discard	Two discards
Firebirds	12	1	4 races or fewer	From 5 to 8 races	9 races or more

11.2 Races on Thursday, Friday and Saturday (the Regatta Series).

The series shall be scored as in the following table:

Classes	Number of races scheduled	Number of races required to constitute a series	No discards	One discard	Two discards
IRC, YTC, IF Boat	9	1	4 races or fewer	From 5 to 8 races	9 races or more

In the tables above, “no discards” means that a boat’s series score shall be the sum of her race scores; “one discard” means that a boat’s series score shall be the sum of her race scores excluding her worst discardable score; “two discards” means that a boat’s series score shall be the sum of her race scores excluding her two worst discardable scores.

11.3 Inter-Club Championship.

- Boats participating in the Inter-Club Championship shall be scored according to their class series scores in the Regatta Series. Team scores will be calculating by adding the series scores of each boat in the team. The team with the lowest total score wins the championship and others shall be ranked accordingly.
- If there is a tie between two or more teams, then they shall be ranked by their team scores in the last race. If a tie remains then they shall be ranked by their team scores in the next-to-last race and so on until all ties are broken.
- Series scores will be adjusted when classes sail different numbers of races.

12. SAFETY REGULATIONS [NP][DP]

12.1 SIs 12.2 to 12.5 are in addition to the requirements of NoR regulation 3.3.

12.2 Competitors who leave the cockpit of a boat not fitted with guardrails shall wear an appropriate personal flotation device.

12.3 Any boat that retires shall inform the signals vessel, or another official vessel, as soon as possible on VHF Ch.72. If unable to do so, they shall inform the race office by telephone (01326 211555) at the first opportunity.

12.4 Competitors shall obey the instructions of an official vessel displaying Flag R to move out of the way of shipping constricted in its ability to manoeuvre or constrained by its draft.

12.5 Competitors requiring assistance from a patrol vessel should call “Bay Safety Control” on VHF Ch. 72.

13. EQUIPMENT AND MEASUREMENT CHECKS

A boat or equipment may be inspected at any time for compliance with the class rules and sailing instructions. On the water, a boat can be instructed by a race committee measurer to proceed immediately to a designated area for inspection.

14. HAUL OUT RESTRICTIONS

Boats shall not be hauled out during the regatta except with and according to the terms of prior written permission of the race committee.

15. RADIO COMMUNICATION

Except in an emergency, a boat shall neither make radio transmissions when racing nor receive radio communications not available to all boats. This restriction also applies to mobile telephones.

16. PRIZES

16.1 Prizes will be awarded in accordance with the Notice of Race.

16.2 Subject to the ongoing Covid situation not worsening, daily prizes will be presented at approximately 1815 as follows:

Sunday	HRSC (including B class if it races with the Bay fleet)
Monday	MYC
Tuesday	RSC
Wednesday	No prize-giving because of the flying display
Thursday	RCYC (including the prizes for Wednesday)
Friday	StMSC
Saturday	FSC

Daily presentations will be preceded by refreshments for competitors and followers. Because of the settings at each club different Covid arrangements will apply. For last minute information competitors should check the club hosting information on the event website

<https://falmouthweek.co.uk/host-clubs/>.

16.3 Series prizes, including the Inter-club Championship prize, will be presented on Saturday at Flushing Sailing Club at approximately 1900, following the daily prizegiving.

17. RISK STATEMENT

17.1 Rule 3 of the Racing Rules of Sailing states: “The responsibility for a boat’s decision to participate in a race or to continue racing is hers alone”.

17.2 Sailing is by its nature an unpredictable sport and therefore inherently involves an element of risk. By taking part in the event, each competitor agrees and acknowledges that:

- (a) they are aware of the inherent element of risk involved in the sport and accept responsibility for the exposure of themselves, their crew and their boat to such inherent risk whilst taking part in the event;
- (b) they are responsible for the safety of themselves, their crew, their boat and their other property whether afloat or ashore;
- (c) they accept responsibility for any injury, damage or loss to the extent caused by their own actions and omissions;
- (d) their boat is in good order, equipped to sail in the event and they are fit to participate;
- (e) provision of a race management team, patrol boats and other officials and volunteers by the event organiser does not relieve them of their own responsibilities;
- (f) provision of patrol boat cover is limited to such assistance, particularly in extreme weather conditions, as can be practically provided in the circumstances.
- (g) it is their responsibility to familiarise themselves with any risks specific to this venue or event drawn to their attention in any rules and information produced for the venue or event and to attend any safety briefing held for the event.

17.3 The fact that the race committee conducts inspections of a boat does not reduce the responsibilities of each competitor set out in these sailing instructions.

18. INSURANCE

Each participating boat shall be insured with valid third-party liability insurance with a minimum cover of £3,000,000 per event, or the equivalent.

SECTION 2 - REGATTA COURSES

19. INTRODUCTION

- 19.1** The sailing instructions in this section will apply to the regatta courses sailed by all Bay classes on Sunday, Monday and Tuesday and to the Firebird class only on Thursday, Friday and Saturday.
- 19.2** B class (Large Working Boats), which normally race in the Carrick fleet, may sail their second race on Sunday with the Bay fleet, weather permitting.
- 19.3** The race committee may alter the class start sequence from that shown or amalgamate or classes into more divisions in the light of entries received at the start of the event.

20. SCHEDULE OF RACES

- 20.1** The warning signal for the first class to start the first race of the day will not be before 1055. The warning signal for the first class to start the second race of the day will not be before 1315. Classes will start in the following order: Firebirds, IRC 1, IRC 2, IRC 3, YTC E, YTC Q, YTC U, IF Boat, B class (2nd race on Sunday only).
- 20.2** For the Firebird class on Thursday, Friday and Saturday, the warning signal for the second and subsequent races of the day will be displayed as soon as possible.

21. RACING AREA

The race area is Falmouth Bay. On Sunday only the race area will include the Helford River, approximately as far as Mawnan Shear (50° 05.99' N, 005° 06.00' W).

22. THE COURSES

- 22.1** For all races except the second race on Sunday, courses will be selected from the list at Addendum A.
- 22.2** For the second race on Sunday only, courses will be selected from the list at Addendum B.
- 22.3** The descriptions and approximate positions of the marks of the courses are at Addendum C.

23. CHANGE TO A LEG OF THE COURSE

If a race committee vessel displays flag "O" and makes repeated sound signals, at or near a race mark, it means, "pass this mark on the required side and between the mark and the committee vessel then sail direct to the designated finish for this race".

24. THE FINISH

- 24.1** For all classes in the second race on Sunday, the finishing line will be in the mouth of the Helford River, between the mast on a signals vessel displaying an orange flag and a dan buoy with an orange flag.
- 24.2** For all classes in the second race on Monday and Tuesday, the finishing line will be on the west side of Pendennis Point between the mast on a signals vessel displaying an orange flag and a dan buoy with an orange flag.
- 24.3** For the Firebird class for the first race on Sunday, Monday and Tuesday, and for all races on Thursday, Friday and Saturday, the finishing line will be between the mast on the signals vessel displaying an orange flag, and a dan buoy with an orange flag; these will be in approximately the same positions as the starting line.

25. TIME LIMIT

- 25.1** Sunday, Monday and Tuesday. For all classes in the second race of the day, the time limit is 1630.
- 25.2** For the Firebird class, for the first race on Sunday, Monday and Tuesday and all races on Thursday, Friday and Saturday, the target time for races sailed on regatta courses is approximately 70 minutes and the time limit is 90 minutes after the start.
- 25.3** For all classes, after one boat sails the course as required by rule 28 and finishes within the time limit, any boat still racing when the time limit expires will be scored "Did Not Finish". This changes Rules 35, A4 and A5.

26. AREAS THAT ARE OBSTRUCTIONS

- 26.1** For the first race on Sunday, Monday and Tuesday and for all races on Thursday, Friday and Saturday, once boats in the Firebird class have completed the first leg of the course they are to treat the area bounded by windward-leeward marks 1, 3 and 4 as an obstruction.
- 26.2** All boats are to sail to seaward of August Rock starboard lateral mark (approximate position: 50° 06.12' N, 005° 05.01' W).

SECTION 3 – WEDNESDAY: ANCASTA CHAMPAGNE RACES FOR IRC 1+2 COMBINED AND YTC E+Q COMBINED, AND LONG-DISTANCE RACES FOR FIREBIRD, IRC 3, YTC U AND IF BOAT (K)

27. SCHEDULE OF RACES

27.1 Classes will start in the following order:

Firebirds, IRC 1+2 combined, YTC E+Q combined, IRC 3, YTC U, K

27.2 The warning signal for the first class to start will not be before 1025.

27.3 The race committee may alter the class start sequence from that shown or amalgamate or split classes into more divisions in the light of entries received at the start of the event.

28. RACING AREA

The race area is Falmouth Bay and Gerrans Bay, as shown in Addendum C.

29. THE COURSES

29.1 Courses will be selected from the list at Addendum D.

29.2 Addendum C lists the descriptions and approximate positions of the marks of the courses.

30. CHANGE TO THE NEXT LEG OF THE COURSE

If a race committee vessel displays flag “O” and makes repeated sound signals, at or near a race mark, it means, “pass this mark on the required side and between the mark and the committee vessel then sail direct to the designated finish for this race”.

31. THE FINISH

The finish will be on the west side of Pendennis Point, between the mast on a committee vessel displaying an orange flag, and a dan buoy with an orange flag.

32. TIME LIMIT

The time limit is 1630. After one boat sails the course as required by rule 28 and finishes within the time limit, any boat still racing when the time limit expires will be scored “Did Not Finish” without a hearing. This changes Rules 35, A4 and A5.

SECTION 4 - WINDWARD/LEEWARD AND WINDWARD/LEEWARD/TRIANGLE COURSES

33. SCHEDULE OF RACES

33.1 Classes will start in the following sequence:

IRC 1, IRC 2, IRC 3, E, Q, U, K

33.2 The warning signal for the first class to start will not be before 1100. On Thursday, Friday and Saturday, warning signals for subsequent races will be displayed as soon as possible.

33.3 The race committee may alter the class start sequence from that shown or amalgamate or split classes into more divisions in the light of entries received at the start of the event.

34. RACING AREA

The race area is Falmouth Bay, including the area to the east of Old Wall.

35. THE COURSES

35.1 Courses and the range and bearing of the first windward mark will be announced on VHF and by no other means. Failure to make a broadcast will not be grounds for a request for redress. This changes rule 62.1(a).

35.2 The diagram in Addendum E shows the courses, the start and finish lines and the order in which marks are to be passed. Marks 1, 2, 3 and 4 (and marks 1a and 2a, when laid) are to be left to port on all courses.

35.3 Two separate windward marks will be laid for all courses: a long course windward mark (mark 1) and a short course mark (mark 2). At the discretion of the race committee, associated spreader marks may be laid (marks 1a and 2a) and this will be announced on VHF channel 72. Failure to make a broadcast will not be grounds for a request for redress. This changes rule 62.1(a).

36. MARKS

Marks 1, 1a, 2, 2a, 3 and 4 will be red or orange cylindrical buoys.

37. CHANGE TO A LEG OF THE COURSE

37.1 Marks may be moved by not more than 200m and/or 15 degrees without signalling. This changes rule 33.

37.2 To change the next leg of the course, the race committee may lay a new mark (or move the finishing line) and remove the original mark as soon as practicable. When in a subsequent change a new mark is replaced, it will be replaced by the original mark.

38. SHORTEN COURSE

If a race committee vessel displays flag "F" and makes repeated sound signals as the leading boats in a class approach mark 4, it means, for boats in that class, "pass this mark on the required side and between the mark and the committee vessel then sail direct to the designated finish for this race".

39. THE FINISH

The finish line will be between the mast or staff on the committee vessels vessel displaying an orange flag, and a blue spherical buoy.

40. AREAS THAT ARE OBSTRUCTIONS

Boats racing on courses C1 to C6 inclusive are to treat the area between marks 2 and 2a as an obstruction.

41. TARGET TIME AND TIME LIMIT

The target time for each race is approximately 75 minutes and the time limit will be 100 minutes. Boats still racing 25 minutes after the first boat in each class sails the course as required by rule 28 and finishes will be scored Did Not Finish. This changes rules 35, A4 and A5.

ADDENDUM A: REGATTA COURSES FOR ALL REGATTA COURSE RACES EXCEPT THE SECOND RACE ON SUNDAY

The table shows the group of courses to be used for a given wind direction, and the courses in that group.

All marks are to be passed to port unless otherwise shown; for example, R(s) means pass Rosemullion (Meudon Hotel) to starboard; P means pass Porthallow to port.

FOR ALL GROUPS, COURSE 9 IS AT THE RACE OFFICER'S DISCRETION; to be COMMUNICATED BY VHF ONLY.

								Approx distance (nm)
GROUP 1		NORTH		Start area: near Meudon Hotel (R)				
1	GY	R	GY	M	C	A	Finish	10
2	GY	M	P	C	A		Finish	9
3	GY	M	R	C	A	C A	Finish	9
4	GY	P	A				Finish	8
5	GY	R	GY	M	A		Finish	8
6	GY	M	R	C	A		Finish	7
7	GY	R	C	A			Finish	6
GROUP 2		NORTH WEST		Start area: near Central (C)				
1	GY	M	C	GY	M	C A	Finish	10
2	GY	M	H	A			Finish	9
3	WX	M	H	A			Finish	8
4	WX	M	C	WX	M	C A	Finish	8
5	GY	R	C	A			Finish	7
6	GY	M	C	A			Finish	6
GROUP 3		WEST		Start area: near Central (C)				
1	M	R	C	M	R	C A	Finish	11
2	M	R	C	M	C	A	Finish	10
3	M	R	OW	C	OW	A	Finish	9
4	M	R	GY	C	A		Finish	8
5	M	R	OW	A			Finish	7
6	M	R	C	A			Finish	6
GROUP 4		SOUTH WEST		Start area: near Northern (A)				
1	N	C	A	R	A		Finish	12
2	N	A	R	A			Finish	10
3	R	C	A	R	A		Finish	9
4	R	A	R	A			Finish	8
5	N	A					Finish	7
6	WX	A	WX	C	A		Finish	6
GROUP 5		SOUTH		Start area: near Penryn Dental Practice (GY)				
1	P	C	R	P	A		Finish	11
2	P	OW	A	C	A		Finish	10
3	R	C	GY	R	C A		Finish	9
4	P	OW	A				Finish	8
5	R	GY	R	A			Finish	7
6	R	OW	A				Finish	6

|continued on next page

GROUP 6		SOUTH EAST			Start area: near Penryn Dental Practice (GY)					
1	C(s)	P(s)	GY(s)	C(s)	GY(s)	A		Finish	11	
2	C(s)	R(s)	GY(s)	C(s)	GY(s)	A		Finish	9	
3	C(s)	P(s)	GY(s)	A				Finish	8	
4	C(s)	GY(s)	C(s)	GY(s)	A			Finish	7	
5	C(s)	M(s)	GY(s)	A				Finish	6	
6	B(s)	C(s)	A					Finish	6	
GROUP 7		EAST			Start area: near Flip Flop Shop(M)					
1	OW(s)	H(s)	R(s)	C(s)	R(s)	A		Finish	12	
2	OW(s)	H(s)	R(s)	A				Finish	9	
3	OW(s)	B(s)	R(s)	A				Finish	8	
4	OW(s)	R(s)	A					Finish	7	
5	OW(s)	C(s)	GY(s)	A				Finish	6	
6	OW(s)	C(s)	A					Finish	5	
GROUP 8		NORTH EAST			Start area: near Meudon Hotel (R)					
1	A	GY	M	R	A	GY	R	A	Finish	11
2	A	GY	N	C	A				Finish	10
3	A	GY	P	C	A				Finish	9
4	A	M	R	A					Finish	7
5	A	GY	R	A					Finish	7
6	A	R	A						Finish	6

ADDENDUM B: COURSES FOR THE SECOND RACE ON SUNDAY

The table shows the group of courses to be used for a given wind direction, and the courses in that group.

All marks are to be passed to port unless otherwise shown; for example, R(s) means pass Rosemullion (Meudon Hotel) to starboard; P means pass Porthallow to port.

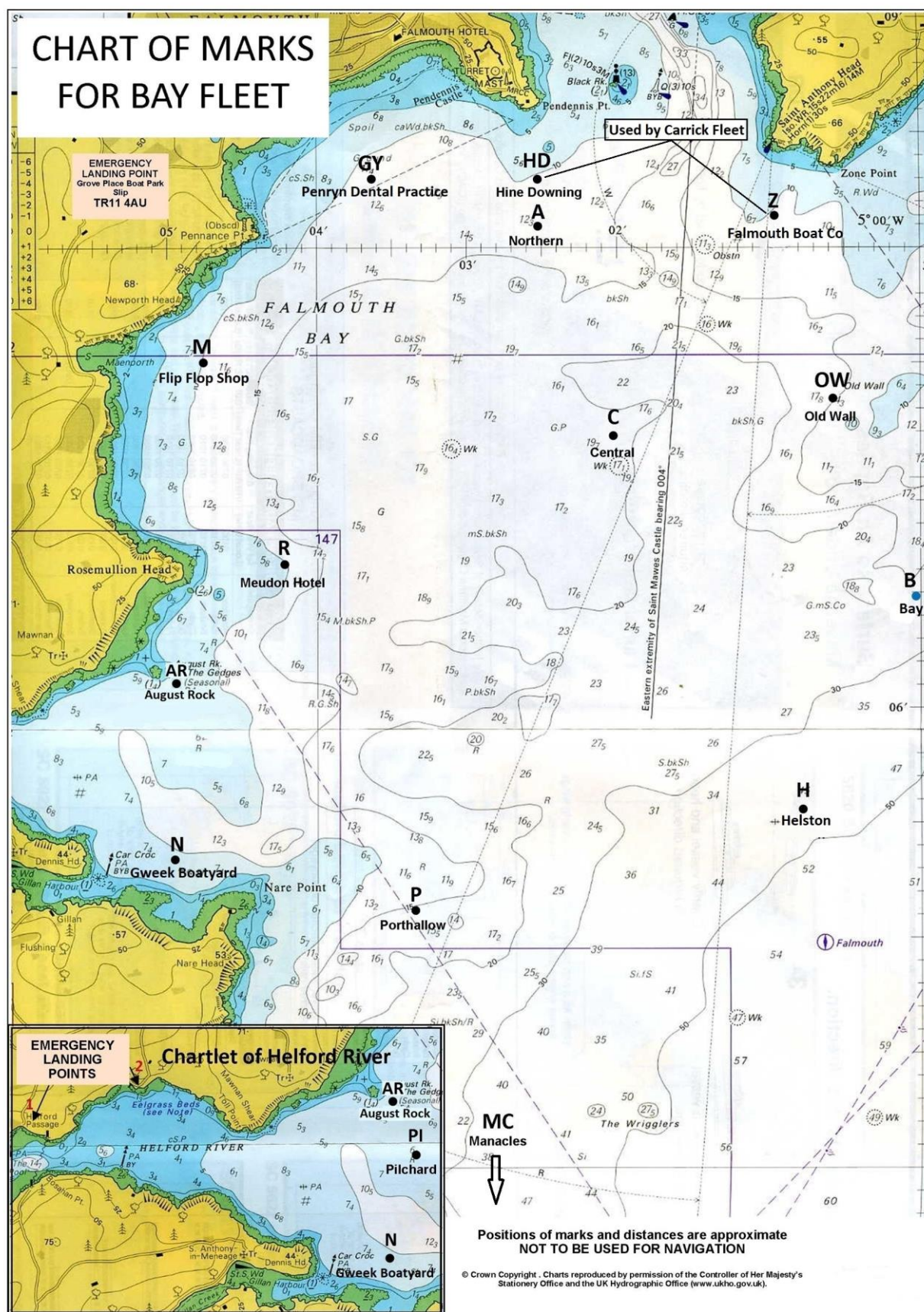
FOR ALL GROUPS, COURSE 9 IS AT THE RACE OFFICER'S DISCRETION; to be COMMUNICATED BY VHF ONLY.

GROUP 1 NORTH Start area: near Meudon Hotel (R)							Approx distance (nm)
1	GY	M	C(s)	P(s)		Finish	9
2	GY	M	C(s)			Finish	8
3	GY	M	R	M		Finish	7
4	GY	M	C(s)			Finish	7
5	GY	M	P(s)	N(s)		Finish	7
6	GY	M	P(s)			Finish	6
GROUP 2 NORTH WEST Start area: near Central (C)							
1	GY	M	C(s)	P(s)	R	Finish	9
2	GY	C(s)	M	P(s)		Finish	8
3	GY	P(s)	R			Finish	7
4	GY	C(s)	M			Finish	7
5	GY	M	P(s)			Finish	6
6	GY	M				Finish	5
GROUP 3 WEST Start area: near Central (C)							
1	M(s)	GY(s)	P(s)	R		Finish	9
2	M(s)	GY(s)	A(s)	R	P(s)	Finish	8
3	M(s)	A(s)	P(s)	N(s)		Finish	8
4	M(s)	GY(s)	P(s)			Finish	7
5	M(s)	C(s)				Finish	6
GROUP 4 SOUTH WEST Start area: near Northern (A)							
1	R(s)	GY(s)	C(s)	P(s)		Finish	9
2	R(s)	M(s)	C(s)	P(s)		Finish	8
3	R(s)	A(s)				Finish	7
4	R(s)	M(s)	P(s)			Finish	7
5	P(s)	N(s)				Finish	5
GROUP 5 SOUTH Start area: near Penryn Dental Practice (GY)							
1	MC(s)	N(s)				Finish	9
2	P(s)	M	N(s)			Finish	8
3	P(s)	R	N(s)			Finish	7
4	P(s)	N(s)				Finish	5
GROUP 6 SOUTH EAST Start area: near Penryn Dental Practice (GY)							
1	C(s)	MC(s)	N(s)			Finish	10
2	C(s)	M	P(s)	N(s)		Finish	8
3	C(s)	R	P(s)	N(s)		Finish	6
4	C(s)	P(s)	N(s)			Finish	5
GROUP 7 EAST Start area: near Flip Flop Shop (M)							
1	OW(s)	B(s)	H(s)	P(s)	N(s)	Finish	9
2	C(s)	B(s)	H(s)	P(s)	N(s)	Finish	8
3	OW(s)	R	P(s)	N(s)		Finish	8
4	C(s)	R	P(s)	N(s)		Finish	7
5	C(s)	H(s)	P(s)	N(s)		Finish	7
6	C(s)	N(s)				Finish	5
GROUP 8 NORTH EAST Start area: near Meudon Hotel (R)							
1	A(s)	MC(s)	N(s)			Finish	11
2	A(s)	R(s)	M(s)	P(s)	N(s)	Finish	9
3	A(s)	P(s)	N(s)			Finish	7
4	A(s)	OW(s)	P(s)	N(s)		Finish	7
5	A(s)	N(s)				Finish	6

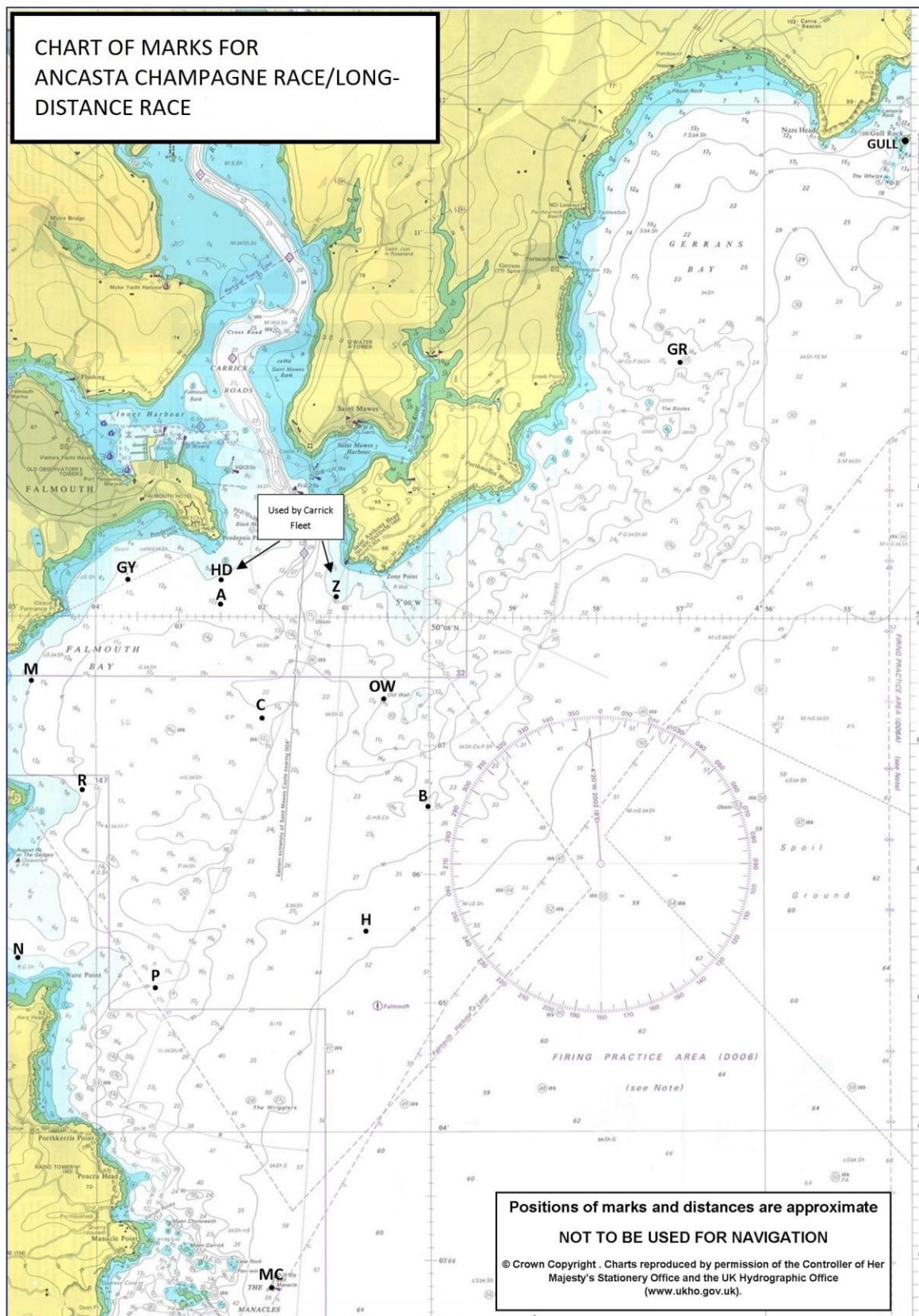
ADDENDUM C: REGATTA AND ANCASTA CHAMPAGNE RACE/LONG-DISTANCE RACE MARK DESCRIPTIONS AND CHARTLETS

CODE	MARK	DESCRIPTION	LAT	LONG
A	Northern	Red, Orange or Yellow Inflatable	50° 08.10' N	005° 02.50' W
B	Bay	Red, Orange or Yellow Inflatable	50° 06.50' N	005° 00.00' W
C	Central	Red, Orange or Yellow Inflatable	50° 07.20' N	005° 02.00' W
GY	Penryn Dental Practice	Yellow Spherical	50° 08.30' N	005° 03.60' W
H	Helston	Yellow Spherical	50° 05.55' N	005° 00.75' W
HD	Hine Downing	Yellow Spherical	50° 08.39' N	005° 02.76' W
M	Flip Flop Shop	Yellow Spherical	50° 07.50' N	005° 04.80' W
MC	Manacles	East Cardinal Buoy	50° 02.81' N	005° 01.91' W
N	Gweek Boatyard	Yellow Spherical	50° 05.36' N	005° 04.91' W
OW	Old Wall	Yellow Spherical	50° 07.35' N	005° 00.55' W
P	Porthallow	Pink Spherical	50° 05.10' N	005° 03.30' W
R	Meudon Hotel	Yellow Spherical	50° 06.61' N	005° 04.20' W
WX	Windward	Red Cylindrical	Laid mark to windward of the start line	
Z	Falmouth Boat Co	Yellow Spherical	50° 08.15' N	005° 01.10' W
ADDITIONAL MARKS FOR THE ANCASTA CHAMPAGNE RACE/LONG DISTANCE RACE				
GR	Greeb	Red, Orange or Yellow Inflatable	50° 10.00' N	004° 57.00' W
GULL	Gull Rock	Prominent islet	50° 11.72' N	004° 54.32' W

CHARTLET FOR BAY REGATTA COURSES



CHARTLET FOR THE ANCASTA CHAMPAGNE RACE/LONG-DISTANCE RACE



ADDENDUM D: COURSES FOR THE ANCASTA CHAMPAGNE RACE AND THE LONG DISTANCE RACE ON WEDNESDAY

The table shows the group of courses to be used for a given wind direction, and the courses in that group. **All marks are to be passed to port unless otherwise shown; for example, R(s) means pass Rosemullion (Meudon Hotel) to starboard; P means pass Porthallow to port.**

FOR ALL GROUPS, COURSE 9 IS AT THE RACE OFFICER'S DISCRETION; to be COMMUNICATED BY VHF ONLY.

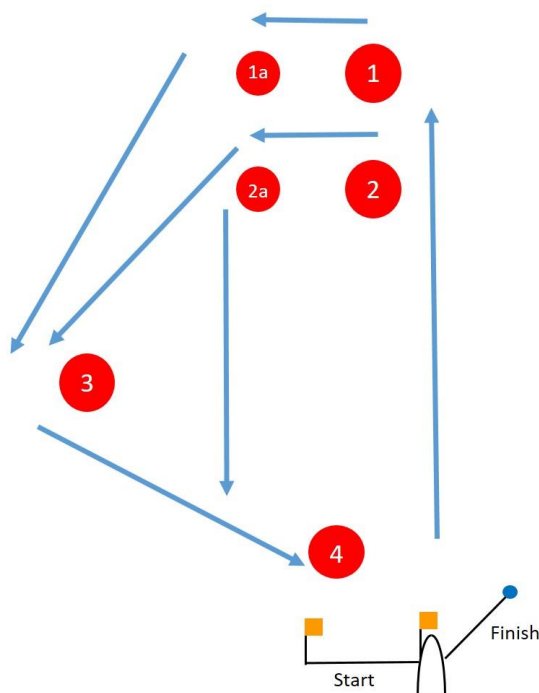
										Approx distance (nm)
GROUP 1		NORTH			Start area: near Central (C)					
1	A	GY	MC	A	P	H	OW	A	Finish	23
2	A	GY	MC	C	P	H	A		Finish	20
3	A	GY	P	H	A	GY	P	C A	Finish	18
4	A	GY	MC	B	OW	B	OW	A	Finish	17
5	A	GY	P	C	A	GY	H	A	Finish	16
6	A	GY	MC	H	A				Finish	14
7	A	GY	N	P	H	B	OW	A	Finish	12
GROUP 2		NORTHWEST			Start area: near Central (C)					
1	GY	MC	GR	P(s)	N(s)	A			Finish	27
2	GY	H	GR	P(s)	N(s)	A			Finish	22
3	GY	H	GR	C(s)	A				Finish	17
4	GY	MC	H	P(s)	A				Finish	15
5	GY	MC	A						Finish	13
6	GY	P	R(s)	H	A				Finish	12
GROUP 3		WEST			Start area: near Old Wall (OW)					
1	M	MC	GULL	C(s)	A				Finish	27
2	M	MC	GR	C(s)	A				Finish	22
3	M	MC	H	P(s)	B	C(s)	A		Finish	17
4	M	H(s)	P(s)	B	C(s)	A			Finish	14
5	M	MC	H	C(s)	A				Finish	15
6	M	R(s)	N	H	C(s)	A			Finish	12
GROUP 4		SOUTH WEST			Start area: near Central (C)					
1	P	GULL(s)	H(s)	A					Finish	23
2	P	GULL(s)	OW(s)	A					Finish	20
3	P	H	GR	C(s)	R(s)	A			Finish	18
4	P	H	GR	C(s)	A				Finish	16
5	P	MC	H	C(s)	A				Finish	13
6	P	MC	H	R(s)	A				Finish	13
7	P	MC	OW	C(s)	A				Finish	12
GROUP 5		SOUTH			Start area: near Penryn Dental Practice (GY)					
1	MC	GULL	A						Finish	23
2	MC	GR	B(s)	A					Finish	20
3	MC	GR	A						Finish	18
4	P	GR	OW(s)	A					Finish	15
5	P	GY	P	A					Finish	14
6	P	C	P	C	A				Finish	12
7	P	H	C	H	A				Finish	12
GROUP 6		SOUTH EAST			Start area: near Penryn Dental Practice (GY)					
1	H(s)	R	MC	B	M	C	A		Finish	22
2	H(s)	R	MC	B	P	C	A		Finish	21
3	H(s)	R	P	OW	N	C	A		Finish	18
4	H(s)	R	MC	C	A				Finish	16
5	H(s)	R	P	C	A				Finish	12

continued on next page

GROUP 7		EAST				Start area: near Meudon Hotel (R)			
1	OW	GULL(s)	MC(s)	A					25
2	OW	GULL(s)	H(s)	A					20
3	OW	GR(s)	MC(s)	A					20
4	OW	GY	N	B	M	R	A		18
5	OW	GR(s)	H(s)	A					15
6	OW	GY	R	OW	M	R	A		15
7	OW	GY	R	B	A				13
GROUP 8		NORTH EAST				Start area: near Meudon Hotel (R)			
1	GULL	MC	C	A				Finish	23
2	GR	MC	C	A				Finish	21
3	GULL	P	C	A				Finish	20
4	GR	P	C	A				Finish	17
5	GR	OW	A					Finish	15
6	GR	C	A					Finish	14

ADDENDUM E: WINDWARD-LEEWARD COURSE DIAGRAM AND COURSES

Course Diagram (not to scale; indicative diagram only)



- Internal angle: approximately 60°.
- Marks may be moved by not more than 200m and/or 15 degrees without signalling.
- Spreader marks may be laid (marks 1a and 2a) and this will be announced on VHF channel 72.
- Boats racing on courses C1 to C6 inclusive are to treat the area between marks 2 and 2a as an obstruction.
- If a race committee vessel displays flag “F” and makes repeated sound signals as the leading boats in a class approach mark 4, it means, for boats in that class, “pass this mark on the required side and between the mark and the committee vessel then sail direct to the designated finish for this race”.

COURSES	
Signal	Mark Rounding Order (Marks 1, 2, 3 and 4 to be left to port)
C1	Start - 1 - 4 - 1 - 4 - Finish
C2	Start - 1 - 4 - 1 - 4 - 1 - 4 - Finish
C3	Start - 1 - 3 - 4 - 1 - 4 - Finish
C4	Start - 1 - 4 - 1 - 3 - 4 - Finish
C5	Start - 1 - 3 - 4 - 1 - 4 - 1 - 3 - 4 - Finish
C6	Start - 1 - 4 - 1 - 3 - 4 - 1 - 4 - Finish
D1	Start - 2 - 4 - 2 - 4 - Finish
D2	Start - 2 - 4 - 2 - 4 - 2 - 4 - Finish
D3	Start - 2 - 3 - 4 - 2 - 4 - Finish
D4	Start - 2 - 4 - 2 - 3 - 4 - Finish
D5	Start - 2 - 3 - 4 - 1 - 4 - 2 - 3 - 4 - Finish
D6	Start - 2 - 4 - 2 - 3 - 4 - 2 - 4 - Finish

NOT PART OF THE SAILING INSTRUCTIONS

QR CODE TO JOIN THE BAY FLEET WHATSAPP GROUP

1. Open WhatsApp, tap Camera
2. Hold device over the QR code to scan (adjust distance so QR code fits the screen)
3. Tap ADD

