

FALMOUTH SAILING WEEK 2020

Wednesday 12th to Saturday 15th August

Organising Authority: Port of Falmouth Sailing Association (PoFSA)
(Website: www.falmouthweek.co.uk/sailing-week)

SAILING INSTRUCTIONS FOR THE BAY FLEET incorporating the Ancasta Champagne Race and the Hine Downing Series

The races on Thursday to Saturday are nominally hosted by the PoFSA clubs as follows:

Thursday: *Royal Cornwall YC and Helford River SC*
Friday: *St Mawes SC and Mylor YC*
Saturday: *Flushing SC and Restronguet SC*

Abbreviations:

[NP] - A breach of this rule will not be grounds for protest by a boat (changes RRS 60.1(a)).

[DP] - Rules for which the penalties are at the discretion of the protest committee.

1. RULES

- 1.1 The regatta will be governed by the rules as defined in *The Racing Rules of Sailing*.
- 1.2 The World Sailing Offshore Special Regulations 2020 - 2021 Appendix B - Inshore Racing will apply.
- 1.3 RRS 40 applies at all times while afloat. Flag Y will not be displayed. This changes the Part 4 preamble and RRS 40. Wet suits and dry suits are not personal flotation devices.
- 1.4 YTC boats are permitted to use autopilots. This changes RRS 52.
- 1.5 The following rules are changed:

Rule	SI
26	12.5
27.3	12.9
35	16.1, 16.2
40	1.3
52	1.4
61.1(a)	17.1
62.1(a)	3.2, 3.3, 4.2, 6.4, 12.5, 12.8
66	16.5
A4	16.1, 16.2
A4.2	12.7
A5	16.1, 16.2

2. COVID STATEMENT

[NP][DP] By taking part in any of the races covered by these sailing instructions, each competitor agrees and acknowledges that they will conform with the conditions of entry set out in the notice of race in respect of COVID-19 and that they are responsible for complying with any regulations in force from time to time in respect of COVID-19.

3. NOTICES TO COMPETITORS

3.1 Notices to competitors will be posted on the official notice board located on the Falmouth Week website at www.falmouthweek.co.uk/race-management.

3.2 Race communications may be broadcast on VHF channel 72. Failure to receive such broadcasts will not be grounds for redress. This changes rule 62.1(a).

3.3 The race committee may use email, WhatsApp and SMS text to alert competitors to notices being posted. Failure to receive such alerts will not be grounds for redress. This changes rule 62.1(a).

4. CHANGES TO THE SAILING INSTRUCTIONS

4.1 Any change to the sailing instructions will be posted before 0900 hrs on the day it will take effect, except that any change to the schedule of races will be posted by 2000 hrs on the day before it will take effect.

4.2 Oral changes on the water to these sailing instructions shall be broadcast on VHF channel 72. Failure to receive such broadcasts will not be grounds for redress. This changes rule 62.1(a).

5. SIGNALS MADE ASHORE

5.1 Signals made ashore will be displayed at the Royal Cornwall Yacht Club flagstaff and may be repeated at Mylor Yacht Club and St Mawes Sailing Club.

5.2 When flag "AP" is displayed ashore, "1 minute" is replaced with "not less than 75 minutes" in the race signal AP.

6. SCHEDULE OF RACES

6.1 Racing is scheduled on four days from Wednesday 12th to Saturday 15th August.

6.2 On Wednesday, for the Ancasta Champagne Race, all classes will sail one race on a long regatta course. Races not completed on Wednesday will not be re-sailed.

6.3 The warning signal for the first race on Wednesday will not be before 1100.

6.4 On Thursday, Friday and Saturday, for the Hine Downing Series, up to 3 races per day are scheduled for all classes. Two races per day will normally be sailed. If races are not completed due to adverse weather, etc, or if it is apparent that deteriorating weather may preclude racing, then one additional race may be scheduled on one or more following or preceding days, to recover the schedule. The race committee will endeavour to inform competitors of an intention to sail a 3rd race on any day by posting a notice on the official notice board before 0900 on that day. Failure to post this notice will not be grounds for redress. This changes rule 62.1(a).

6.5 The warning signal for the first race on Thursday, Friday and Saturday will not be before 1045.

6.6 For the second (and third, if sailed) race each day, the order of starts (which will not necessarily be in the same order as in the first race) and the times of each warning signal will be broadcast on VHF. Classes may not be started consecutively: if all boats of a class are ready to start then that class may be started whilst other classes are still completing the preceding race.

6.7 If entries are insufficient to support separate classes then the race committee will endeavour to create one or more composite classes. The final composition of each racing class and its position in the starting order will be published on the official noticeboard no later than 1800 on Sunday 9th August.

6.8 No warning signal shall be made after 1500 on Saturday.

7. CLASS FLAGS

7.1 Class flags for the regatta are:

Class	Flag	Class	Flag
IRC Div 1	Numeral pennant 1	YTC Div 2	U
IRC Div 2	Numeral pennant 2	YTC Div 3	Q
IRC Div 3	Numeral pennant 3	IF Boat	K
YTC Div 1	E		

7.2 With the exception of the IF Boats, all boats racing shall display class flags. If classes are merged per regulation 6.7 then classes affected may continue to display their original entry class flag.

8. RACING AREA

The racing area is depicted in the chartlet at Addendum A.

9. THE COURSES

9.1 All classes will sail regatta (“round-the-cans”) courses.

9.2 There will be no pre-set courses. The courses to be sailed will be announced by VHF radio by reading out the course marks (using the one- or two-letter ID code phonetically) in the order in which they are to be passed and stating the side on which they are to be left.

9.3 **In all courses, August Rock starboard lateral buoy (Gedges Rock) shall be passed to seaward.**

10. MARKS

10.1 A chart showing the approximate positions of the marks is at Addendum A. The mark letters, mark descriptions and approximate coordinates are at Addendum B.

11. AREAS THAT ARE OBSTRUCTIONS [NP][DP]

11.1 Commercial and military shipping. Commercial and military shipping under way and constricted in their ability to manoeuvre are designated as moving exclusion zones. The exclusion zone extends to 100m on all sides of the vessel and includes tugs, race committee escort boats and pilot boats. No boat shall enter the exclusion zone and if becalmed may use any means of propulsion to move out of the way. This should only be sufficient to leave the exclusion zone by the safest possible route and offer the competitor no significant advantage in the race.

11.2 Divers. Exclusion zones extend 25m around a dive boat displaying code flag A, an inflatable orange buoy marking a diver just under the surface, and a diver on the surface. A boat shall not enter the 25m zone.

12. THE START

12.1 The committee boat is the white hulled sloop “*Eseld*”. The committee boat will describe its approximate position on VHF channel 72 approximately 30 minutes before the first scheduled warning signal.

12.2 The starting line will be between the mast on the committee boat, displaying an orange flag, and the racing mark Hine Downing.

12.3 [DP] Boats whose warning signal has not been made shall avoid the starting area during the starting sequence of other races.

12.4 For the first class to start, an attention signal (orange flag with one sound signal) will be made five minutes before the warning signal. The race committee will designate the courses to be sailed before or with the attention signal.

12.5 No start countdown visual signals will be displayed; starting signals and procedures will be broadcast on VHF channel 72. This changes rule 26. Failure to receive a broadcast will not be grounds for a request for redress. This changes rule 62.1(a).

12.6 Flag signals will be displayed for abandonments, postponements and recalls.

12.7 A boat starting later than four minutes after her starting signal will be scored “Did Not Start”. This changes rule A4.2.

12.8 If any part of a boat’s hull, crew or equipment is on the course side of the starting line during the two minutes before her starting signal and she is identified, the race committee will attempt to broadcast her sail number on VHF channel 72. Failure to make a broadcast or to time it accurately will not be grounds for a request for redress. This changes rule 62.1(a).

12.9 In the event of a general recall, the warning signal for the next class to start will be broadcast on VHF channel 72 at the same time as the the next starting signal of the recalled class. This changes rule 27.3.

13. THE FINISH

The finish will be between the mast on a committee boat displaying an orange flag, and the racing mark Hine Downing.

14. CHANGE TO A LEG OF THE COURSE

No legs will be changed.

15. PENALTY SYSTEM

As permitted by rule 44.1, the two-turns penalty is replaced by the one-turn penalty.

16. TIME LIMITS

16.1 Ancasta Champagne Race. The time limit for the Ancasta Champagne Race is 1630. After one boat sails the course as required by rule 28 and finishes within the time limit, any boat failing to finish within 40 minutes of the first boat will be scored "Did Not Finish" without a hearing. This changes Rules 35, A4 and A5.

16.2 Hine Downed Series. The time limit for the first race each day in the Hine Downed Series is 1300. For the second race of the day, the time limit is 1630. In all races, after one boat sails the course as required by rule 28 and finishes within the time limit, any boat failing to finish within 30 minutes of the first boat will be scored "Did Not Finish" without a hearing. This changes Rules 35, A4 and A5.

17. PROTESTS AND REQUESTS FOR REDRESS

17.1 Boats shall comply with rule 61.1(a) irrespective of their length. This changes rule 61.1(a)(2) which is deleted.

17.2 Protest forms may be downloaded from www.rya.org/racing/racing-rules/Pages/rya-protest-form.aspx. Protests shall be emailed to the Chairman of the Protest Committee (alex@davis13@yahoo.com), by the protest time limit.

17.3 The protest time limit will be 2 hours after the last boat has finished the last race of the day or the race committee signals no more racing today, whichever is later. This time limit applies also to protests by the race committee about incidents they observe in the racing area.

17.4 The schedule of protests will be emailed to competitors of hearings in which they are parties or named as witnesses. Hearings will be held using the Zoom software.

17.5 Adding to RRS 66, if the race signal "N over A" is displayed ashore on the last scheduled day of racing a request for reopening a hearing shall be emailed to the Protest Committee Chairman no later than 30 minutes after the signal is displayed.

18. SCORING OF THE HINE DOWNING SERIES

18.1 Six races are scheduled for all classes.

18.2 One race is required to be completed to constitute a series.

18.3 When fewer than 5 races have been completed, a boat's score will be the total of her race scores.

18.4 When 5 or more races have been completed, a boat's series score shall be the total of her race scores excluding her worst score.

19. SAFETY REGULATIONS

19.1 SI 19.2 – 19.5 are in addition to the requirements of NoR 3.3.

19.2 [NP][DP] All boats shall carry a working marine VHF transceiver.

19.3 [NP][DP] Any boat that retires and leaves the race area shall inform the committee boat as soon as possible on VHF channel 72. If unable to do so, they shall inform the race office by telephone (07555 574308) at the first opportunity.

19.4 [NP][DP] Competitors shall obey safety instructions given by Safety Boats displaying IRPCS flag "R" in relation to commercial shipping movements and divers.

19.5 [DP] The second substitute will be displayed on the committee boat, with class flags as appropriate, if the race committee decides, for safety reasons, that spinnakers shall not be deployed in a race. In this case, such boats will be handicapped using their white sail rating or handicap number.

20. EQUIPMENT AND MEASUREMENT CHECKS

A boat or equipment may be inspected at any time for compliance with the class rules and sailing instructions. On the water, a boat can be instructed by a race committee measurer to proceed immediately to a designated area for inspection.

21. HAUL OUT RESTRICTIONS

Boats shall not be hauled out during the regatta except with and according to the terms of prior written permission of the race committee.

22. RADIO COMMUNICATION

Except in an emergency, a boat shall neither make radio transmissions when racing nor receive radio communications not available to all boats. This restriction also applies to mobile telephones.

23. PRIZES

23.1 Prizes will be awarded in accordance with the Notice of Race.

23.2 In addition, where entry classes have been merged into a composite class, a prize will be awarded to the highest placed boat in each entry class, which has finished outside of the prize positions of the composite class.

23.3 No daily prize-giving or series prize-giving will take place. Depending on further developments regarding the pandemic, either an overall prize-giving will be held at a later date or arrangements will be made to distribute prizes.

24. RISK STATEMENT

24.1 Rule 4 of the Racing Rules of Sailing states: "The responsibility for a boat's decision to participate in a race or to continue racing is hers alone".

24.2 Sailing is by its nature an unpredictable sport and therefore inherently involves an element of risk. By taking part in the event, each competitor agrees and acknowledges that:

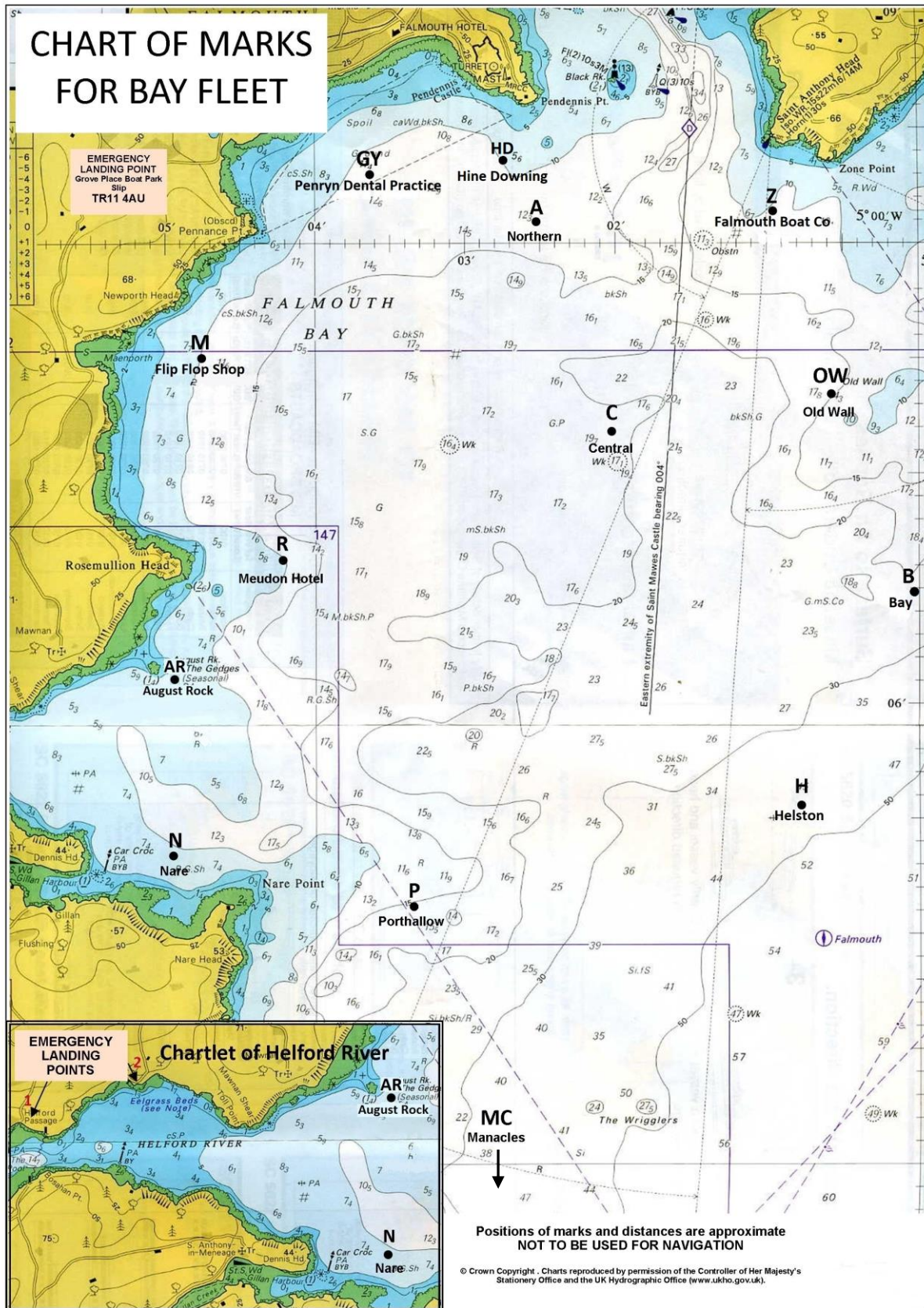
- (a) they are aware of the inherent element of risk involved in the sport and accept responsibility for the exposure of themselves, their crew and their boat to such inherent risk whilst taking part in the event;
- (b) they are responsible for the safety of themselves, their crew, their boat and their other property whether afloat or ashore;
- (c) they accept responsibility for any injury, damage or loss to the extent caused by their own actions and omissions;
- (d) their boat is in good order, equipped to sail in the event and they are fit to participate;
- (e) provision of a race management team, patrol boats and other officials and volunteers by the event organiser does not relieve them of their own responsibilities;
- (f) provision of patrol boat cover is limited to such assistance, particularly in extreme weather conditions, as can be practically provided in the circumstances.
- (g) it is their responsibility to familiarise themselves with any risks specific to this venue or event drawn to their attention in any rules and information produced for the venue or event and to attend any safety briefing held for the event.

24.3 The fact that the race committee conducts inspections of a boat does not reduce the responsibilities of each competitor set out in these sailing instructions.

25. INSURANCE

Each participating boat shall be insured with valid third-party liability insurance with a minimum cover of £3,000,000 per event, or the equivalent.

ADDENDUM A - APPROXIMATE LOCATIONS OF MARKS



ADDENDUM B - COURSE LETTERS, MARK DESCRIPTIONS AND APPROXIMATE COORDINATES OF MARKS

CODE	MARK	DESCRIPTION	LAT	LONG
A	Northern	Yellow spherical	50° 08.10' N	005° 02.50' W
B	Bay	Yellow spherical	50° 06.50' N	005° 00.00' W
C	Central	Yellow spherical	50° 07.20' N	005° 02.00' W
GY	Penryn Dental Practice	Yellow spherical	50° 08.30' N	005° 03.60' W
H	Helston	Yellow spherical	50° 05.55' N	005° 00.75' W
HD	Hine Downing	Yellow spherical	50° 08.39' N	005° 02.76' W
M	Flip Flop Shop	Yellow spherical	50° 07.50' N	005° 04.80' W
MC	Manacles	East Cardinal Buoy	50° 02.81' N	005° 01.91' W
N	Nare	Yellow spherical	50° 05.36' N	005° 04.91' W
OW	Old Wall	Yellow spherical	50° 07.35' N	005° 00.55' W
P	Porthallow	Pink spherical	50° 05.10' N	005° 03.30' W
R	Meudon Hotel	Yellow spherical	50° 06.61' N	005° 04.20' W
Z	Falmouth Boat Co	Yellow spherical	50° 08.15' N	005° 01.10' W

End of sailing instructions

NOT PART OF THE SAILING INSTRUCTIONS

QR CODE TO JOIN THE BAY FLEET WHATSAPP GROUP

1. Open WhatsApp, tap Camera
2. Hold device over the QR code to scan (adjust distance so QR code fits the screen)
3. Tap ADD

